

Coming soon to a library near you!

Progress in the best possible way.

- Automated Materials Handling
- Library Enhancement Project

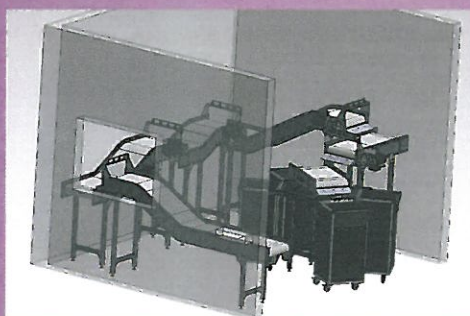
Service Desk



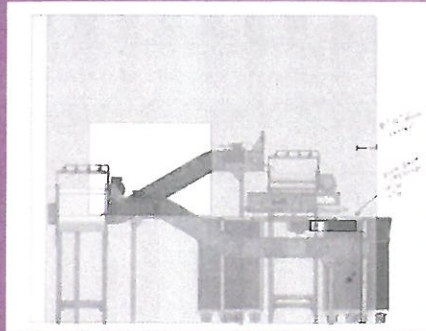
Clearing the way.



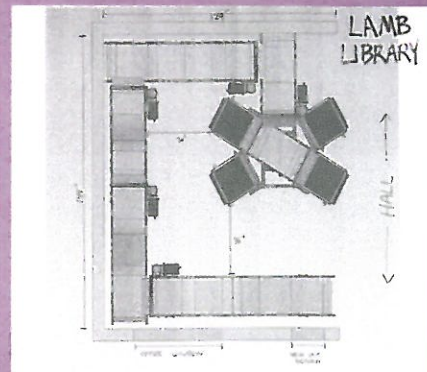
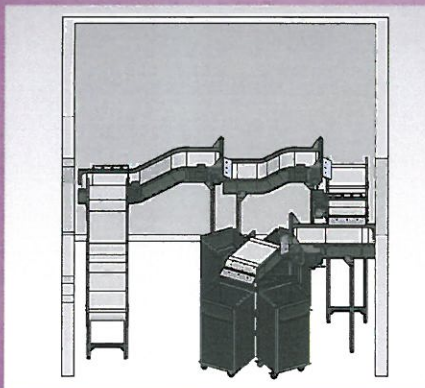
Automated Materials Handling Sorter



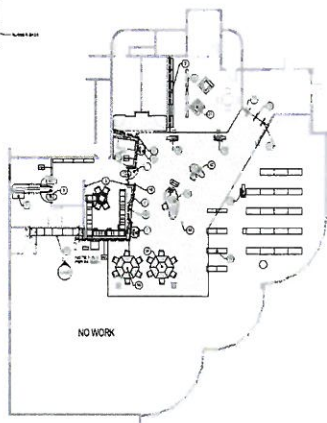
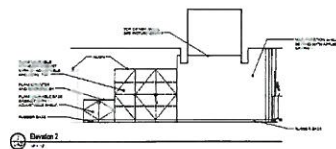
Window View of the Sorter



Side and Aerial view



Diann's new office.



FIRST FLOOR PLAN - PROPOSED

Room	Area	Volume	Height	Notes
101	100	1000	10	1000
102	100	1000	10	1000
103	100	1000	10	1000
104	100	1000	10	1000
105	100	1000	10	1000
106	100	1000	10	1000
107	100	1000	10	1000
108	100	1000	10	1000
109	100	1000	10	1000
110	100	1000	10	1000

GENERAL NOTES:

1. ALL WORK SHALL BE IN ACCORDANCE WITH THE LATEST EDITIONS OF THE BUILDING CODES AND STANDARDS.
2. THE OWNER SHALL BE RESPONSIBLE FOR OBTAINING ALL NECESSARY PERMITS AND APPROVALS.
3. THE CONTRACTOR SHALL BE RESPONSIBLE FOR OBTAINING ALL NECESSARY INSURANCE AND BONDS.
4. THE CONTRACTOR SHALL BE RESPONSIBLE FOR OBTAINING ALL NECESSARY UTILITIES INFORMATION.
5. THE CONTRACTOR SHALL BE RESPONSIBLE FOR OBTAINING ALL NECESSARY ADJACENT PROPERTY INFORMATION.
6. THE CONTRACTOR SHALL BE RESPONSIBLE FOR OBTAINING ALL NECESSARY ADJACENT PROPERTY INFORMATION.
7. THE CONTRACTOR SHALL BE RESPONSIBLE FOR OBTAINING ALL NECESSARY ADJACENT PROPERTY INFORMATION.
8. THE CONTRACTOR SHALL BE RESPONSIBLE FOR OBTAINING ALL NECESSARY ADJACENT PROPERTY INFORMATION.
9. THE CONTRACTOR SHALL BE RESPONSIBLE FOR OBTAINING ALL NECESSARY ADJACENT PROPERTY INFORMATION.
10. THE CONTRACTOR SHALL BE RESPONSIBLE FOR OBTAINING ALL NECESSARY ADJACENT PROPERTY INFORMATION.

SHEET NOTES:

1. ALL WORK SHALL BE IN ACCORDANCE WITH THE LATEST EDITIONS OF THE BUILDING CODES AND STANDARDS.
2. THE OWNER SHALL BE RESPONSIBLE FOR OBTAINING ALL NECESSARY PERMITS AND APPROVALS.
3. THE CONTRACTOR SHALL BE RESPONSIBLE FOR OBTAINING ALL NECESSARY INSURANCE AND BONDS.
4. THE CONTRACTOR SHALL BE RESPONSIBLE FOR OBTAINING ALL NECESSARY UTILITIES INFORMATION.
5. THE CONTRACTOR SHALL BE RESPONSIBLE FOR OBTAINING ALL NECESSARY ADJACENT PROPERTY INFORMATION.
6. THE CONTRACTOR SHALL BE RESPONSIBLE FOR OBTAINING ALL NECESSARY ADJACENT PROPERTY INFORMATION.
7. THE CONTRACTOR SHALL BE RESPONSIBLE FOR OBTAINING ALL NECESSARY ADJACENT PROPERTY INFORMATION.
8. THE CONTRACTOR SHALL BE RESPONSIBLE FOR OBTAINING ALL NECESSARY ADJACENT PROPERTY INFORMATION.
9. THE CONTRACTOR SHALL BE RESPONSIBLE FOR OBTAINING ALL NECESSARY ADJACENT PROPERTY INFORMATION.
10. THE CONTRACTOR SHALL BE RESPONSIBLE FOR OBTAINING ALL NECESSARY ADJACENT PROPERTY INFORMATION.

SHEET LEGEND

FRAME AND DOOR TYPES

studiotra

OWNER

DESIGNED BY

DATE

PROJECT

NO. 101

NO. 102

NO. 103

NO. 104

NO. 105

NO. 106

NO. 107

NO. 108

NO. 109

NO. 110

NO. 111

NO. 112

NO. 113

NO. 114

NO. 115

NO. 116

NO. 117

NO. 118

NO. 119

NO. 120

NO. 121

NO. 122

NO. 123

NO. 124

NO. 125

NO. 126

NO. 127

NO. 128

NO. 129

NO. 130

NO. 131

NO. 132

NO. 133

NO. 134

NO. 135

NO. 136

NO. 137

NO. 138

NO. 139

NO. 140

NO. 141

NO. 142

NO. 143

NO. 144

NO. 145

NO. 146

NO. 147

NO. 148

NO. 149

NO. 150

NO. 151

NO. 152

NO. 153

NO. 154

NO. 155

NO. 156

NO. 157

NO. 158

NO. 159

NO. 160

NO. 161

NO. 162

NO. 163

NO. 164

NO. 165

NO. 166

NO. 167

NO. 168

NO. 169

NO. 170

NO. 171

NO. 172

NO. 173

NO. 174

NO. 175

NO. 176

NO. 177

NO. 178

NO. 179

NO. 180

NO. 181

NO. 182

NO. 183

NO. 184

NO. 185

NO. 186

NO. 187

NO. 188

NO. 189

NO. 190

NO. 191

NO. 192

NO. 193

NO. 194

NO. 195

NO. 196

NO. 197

NO. 198

NO. 199

NO. 200

NO. 201

NO. 202

NO. 203

NO. 204

NO. 205

NO. 206

NO. 207

NO. 208

NO. 209

NO. 210

NO. 211

NO. 212

NO. 213

NO. 214

NO. 215

NO. 216

NO. 217

NO. 218

NO. 219

NO. 220

NO. 221

NO. 222

NO. 223

NO. 224

NO. 225

NO. 226

NO. 227

NO. 228

NO. 229

NO. 230

NO. 231

NO. 232

NO. 233

NO. 234

NO. 235

NO. 236

NO. 237

NO. 238

NO. 239

NO. 240

NO. 241

NO. 242

NO. 243

NO. 244

NO. 245

NO. 246

NO. 247

NO. 248

NO. 249

NO. 250

NO. 251

NO. 252

NO. 253

NO. 254

NO. 255

NO. 256

NO. 257

NO. 258

NO. 259

NO. 260

NO. 261

NO. 262

NO. 263

NO. 264

NO. 265

NO. 266

NO. 267

NO. 268

NO. 269

NO. 270

NO. 271

NO. 272

NO. 273

NO. 274

NO. 275

NO. 276

NO. 277

NO. 278

NO. 279

NO. 280

NO. 281

NO. 282

NO. 283

NO. 284

NO. 285

NO. 286

NO. 287

NO. 288

NO. 289

NO. 290

NO. 291

NO. 292

NO. 293

NO. 294

NO. 295

NO. 296

NO. 297

NO. 298

NO. 299

NO. 300

NO. 301

NO. 302

NO. 303

NO. 304

NO. 305

NO. 306

NO. 307

NO. 308

NO. 309

NO. 310

NO. 311

NO. 312

NO. 313

NO. 314

NO. 315

NO. 316

NO. 317

NO. 318

NO. 319

NO. 320

NO. 321

NO. 322

NO. 323

NO. 324

NO. 325

NO. 326

NO. 327

NO. 328

NO. 329

NO. 330

NO. 331

NO. 332

NO. 333

NO. 334

NO. 335

NO. 336

NO. 337

NO. 338

NO. 339

NO. 340

NO. 341

NO. 342

NO. 343

NO. 344

NO. 345

NO. 346

NO. 347

NO. 348

NO. 349

NO. 350

NO. 351

NO. 352

NO. 353

NO. 354

NO. 355

NO. 356

NO. 357

NO. 358

NO. 359

NO. 360

NO. 361

NO. 362

NO. 363

NO. 364

NO. 365

NO. 366

NO. 367

NO. 368

NO. 369

NO. 370

NO. 371

NO. 372

NO. 373

NO. 374

NO. 375

NO. 376

NO. 377

NO. 378

NO. 379

NO. 380

NO. 381

NO. 382

NO. 383

NO. 384

NO. 385

NO. 386

NO. 387

NO. 388

NO. 389

NO. 390

NO. 391

NO. 392

NO. 393

NO. 394

NO. 395

NO. 396

NO. 397

NO. 398

NO. 399

NO. 400

NO. 401

NO. 402

NO. 403

NO. 404

NO. 405

NO. 406

NO. 407

NO. 408

NO. 409

NO. 410

NO. 411

NO. 412

NO. 413

NO. 414

NO. 415

NO. 416

NO. 417

NO. 418

NO. 419

NO. 420

NO. 421

NO. 422

NO. 423

NO. 424

NO. 425

NO. 426

NO. 427

NO. 428

NO. 429

NO. 430

NO. 431

NO. 432

NO. 433

NO. 434

NO. 435

NO. 436

NO. 437

NO. 438

NO. 439

NO. 440

NO. 441

NO. 442

NO. 443

NO. 444

NO. 445

NO. 446

NO. 447

NO. 448

NO. 449

NO. 450

NO. 451

NO. 452

NO. 453

NO. 454

NO. 455

NO. 456

NO. 457

NO. 458

NO. 459

NO. 460

NO. 461

NO. 462

NO. 463

NO. 464

NO. 465

NO. 466

NO. 467

NO. 468

NO. 469

NO. 470

NO. 471

NO. 472

NO. 473

NO. 474

NO. 475

NO. 476

NO. 477

NO. 478

NO. 479

NO. 480

NO. 481

NO. 482

NO. 483

NO. 484

NO. 485

NO. 486

NO. 487

NO. 488

NO. 489

NO. 490

NO. 491

NO. 492

NO. 493

NO. 494

NO. 495

NO. 496

NO. 497

NO. 498

NO. 499

NO. 500

NO. 501

NO. 502

NO. 503

NO. 504

NO. 505

NO. 506

NO. 507

NO. 508

NO. 509

NO. 510

NO. 511

NO. 512

NO. 513

NO. 514

NO. 515

NO. 516

NO. 517

NO. 518

NO. 519

NO. 520

NO. 521

NO. 522

NO. 523

NO. 524

NO. 525

NO. 526

NO. 527

NO. 528

NO. 529

NO. 530

NO. 531

NO. 532

NO. 533

NO. 534

NO. 535

NO. 536

NO. 537

NO. 538

NO. 539

NO. 540

NO. 541

NO. 542

NO. 543

NO. 544

NO. 545

NO. 546

NO. 547

NO. 548

NO. 549

NO. 550

NO. 551

NO. 552

NO. 553

NO. 554

NO. 555

NO. 556

NO. 557

NO. 558

NO. 559

NO. 560

NO. 561

NO. 562

NO. 563

NO. 564

NO. 565

NO. 566

NO. 567

NO. 568

NO. 569

NO. 570

NO. 571

NO. 572

NO. 573

NO. 574

NO. 575

NO. 576

NO. 577

NO. 578

NO. 579

NO. 580

NO. 581

NO. 582

NO. 583

NO. 584

NO. 585

NO. 586

NO. 587

NO. 588

NO. 589

NO. 590

NO. 591

NO. 592

NO. 593

NO. 594

NO. 595

NO. 596

NO. 597

NO. 598

NO. 599

NO. 600

NO. 601

NO. 602

NO. 603

NO. 604

NO. 605

NO. 606

NO. 607

NO. 608

NO. 609

NO. 610

NO. 611

NO. 612

NO. 613

NO. 614

NO. 615

NO. 616

NO. 617

NO. 618

NO. 619

NO. 620

NO. 621

NO. 622

NO. 623

NO. 624

NO. 625

NO. 626

NO. 627

NO. 628

NO. 629

NO. 630

NO. 631

NO. 632

NO. 633

NO. 634

NO. 635

NO. 636

NO. 637

NO. 638

NO. 639

NO. 640

NO. 641

NO. 642

NO. 643

NO. 644

NO. 645

NO. 646

NO. 647

NO. 648

NO. 649

NO. 650

NO. 651

NO. 652

NO. 653

NO. 654

NO. 655

NO. 656

NO. 657

NO. 658

NO. 659

NO. 660

NO. 661

NO. 662

NO. 663

NO. 664

NO. 665

NO. 666

NO. 667

NO. 668

NO. 669

NO. 670

NO. 671

NO. 672

NO. 673

NO. 674

NO. 675

NO. 676

NO. 677

NO. 678

NO. 679

NO. 680

NO. 681

NO. 682

NO. 683

NO. 684

NO. 685

NO. 686

NO. 687

NO. 688

NO. 689

NO. 690

NO. 691

NO. 692

NO. 693

NO. 694

NO. 695

NO. 696

NO. 697

NO. 698

NO. 699

NO. 700

NO. 701

NO. 702

NO. 703

NO. 704

NO. 705

NO. 706

NO. 707

NO. 708

NO. 709

NO. 710

NO. 711

NO. 712

NO. 713

NO. 714

NO. 715

NO. 716

NO. 717

NO. 718

NO. 719

NO. 720

NO. 721

NO. 722

NO. 723

NO. 724

NO. 725

NO. 726

NO. 727

NO. 728

NO. 729

NO. 730

NO. 731

NO. 732

NO. 733

NO. 734

NO. 735

NO. 736

NO. 737

NO. 738

NO. 739

NO. 740

NO. 741

NO. 742

NO. 743

NO. 744

NO. 745

NO. 746

NO. 747

NO. 748

NO. 749

NO. 750

NO. 751

NO. 752

NO. 753

NO. 754

NO. 755

NO. 756

NO. 757

NO. 758

NO. 759

NO. 760

NO. 761

NO. 762

NO. 763

NO. 764</

Summer Reading Registrations

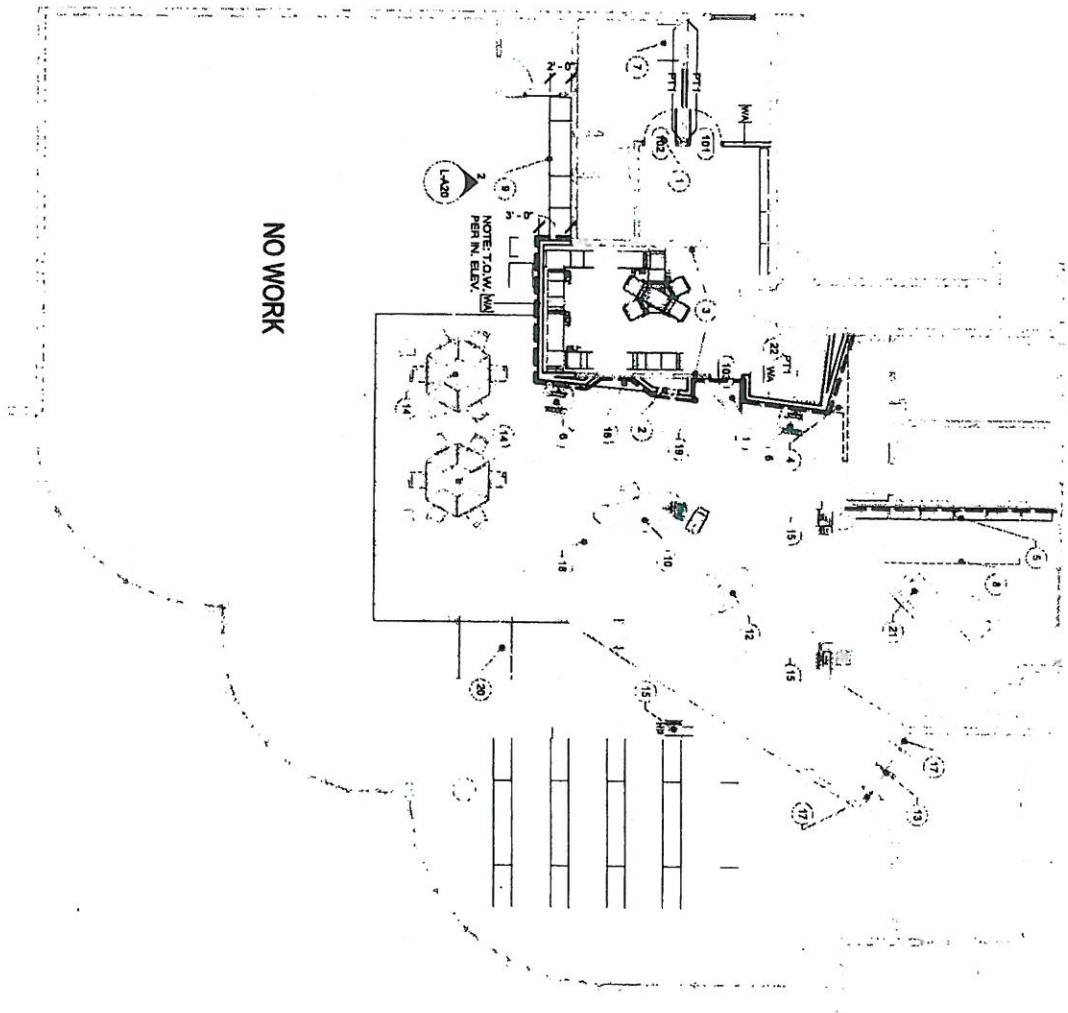
	LAMB 2012	2011	BARKMAN	PW	RAWLINGS
Sweet Dreamzz	105	83	67	97	226
Dream Big!	770	550	425	896	1889
Own the Night	259	135	130	251	633
Between the Covers	103		65	85	373

Children's Program Attendance

	BARKMAN	LAMB	P.WEST	RAWLINGS
Amazing Arthur	185	207	205	233
Little League	111	165	120	196
Merry-Andrew Afoot	100	181	137	180
YS Puppet Show	138	158	160	197
Craft Program	97	142	*	65
Mr. E & Kyle Magic	141	165	176	320
Patti Smithsonian	83	148	130	210
Beth Epley	123	137	152	147
Total	978	1303	1080	1548

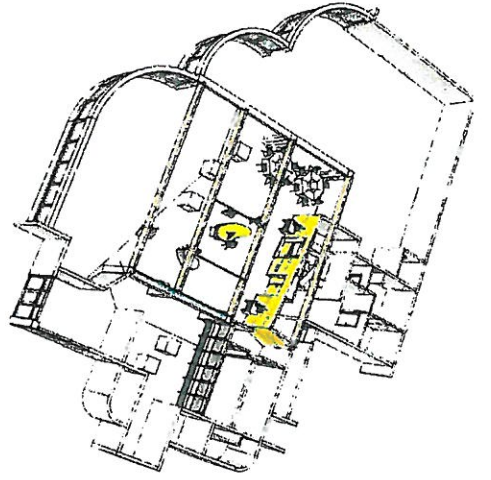
LAMB TEAM



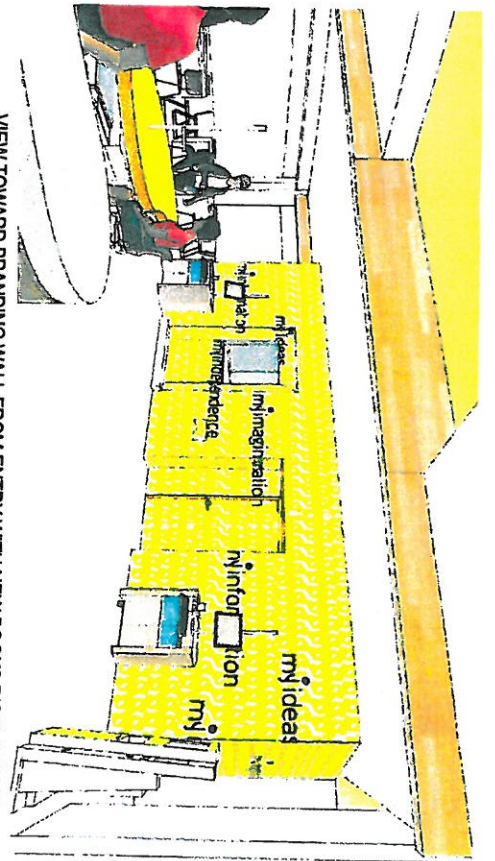


FIRST FLOOR PLAN - PROPOSED

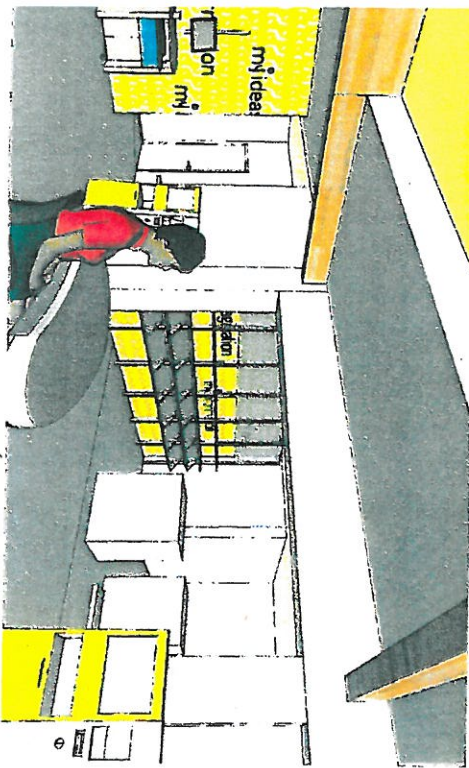
Door Number	DOOR				Door Schedule				FRAME		Comments
	Width	Height	Type	Finish	Material	Type	Finish	Material	Finish	Material	
101	(E) 3'-0"	(E) 7'-0"	(E) SC WD	(E) CLR SEAL	(E) WD	(E) HM	PT	(E) HM			RELOCATED (E) DOOR/FRAME
102	(E) 3'-0"	(E) 7'-0"	(E) SC WD	(E) CLR SEAL	(E) WD	(E) HM	PT	(E) HM			
103	(E) 3'-0"	(E) 7'-0"	(E) SC WD	(E) CLR SEAL	(E) WD	(E) HM	PT	(E) HM			



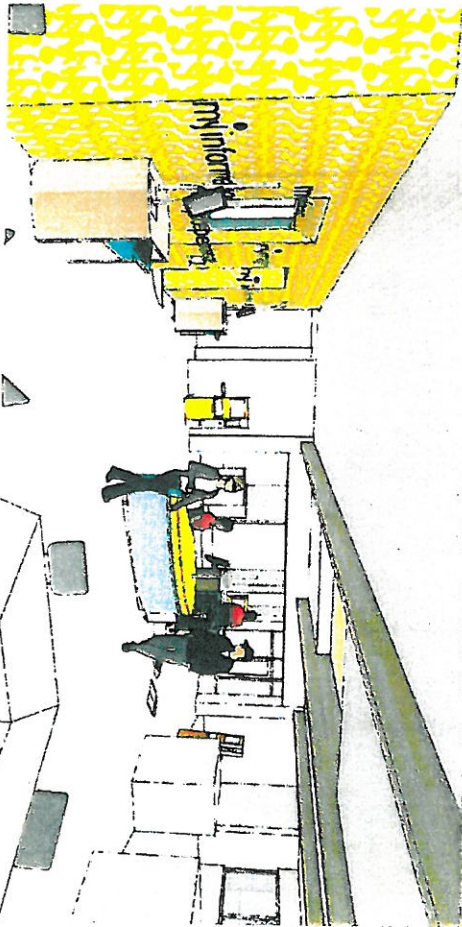
AERIAL VIEW



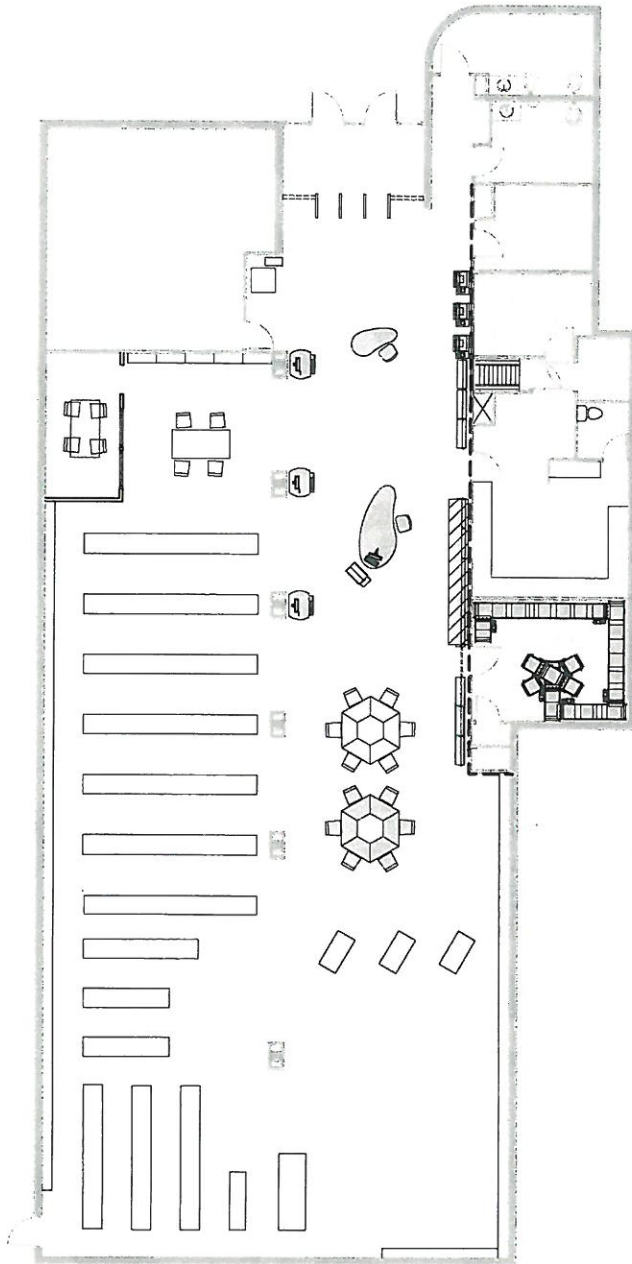
VIEW TOWARD BRANDING WALL FROM ENTRY WITH NEW BOOKS DISPLAY IN FOREGROUND

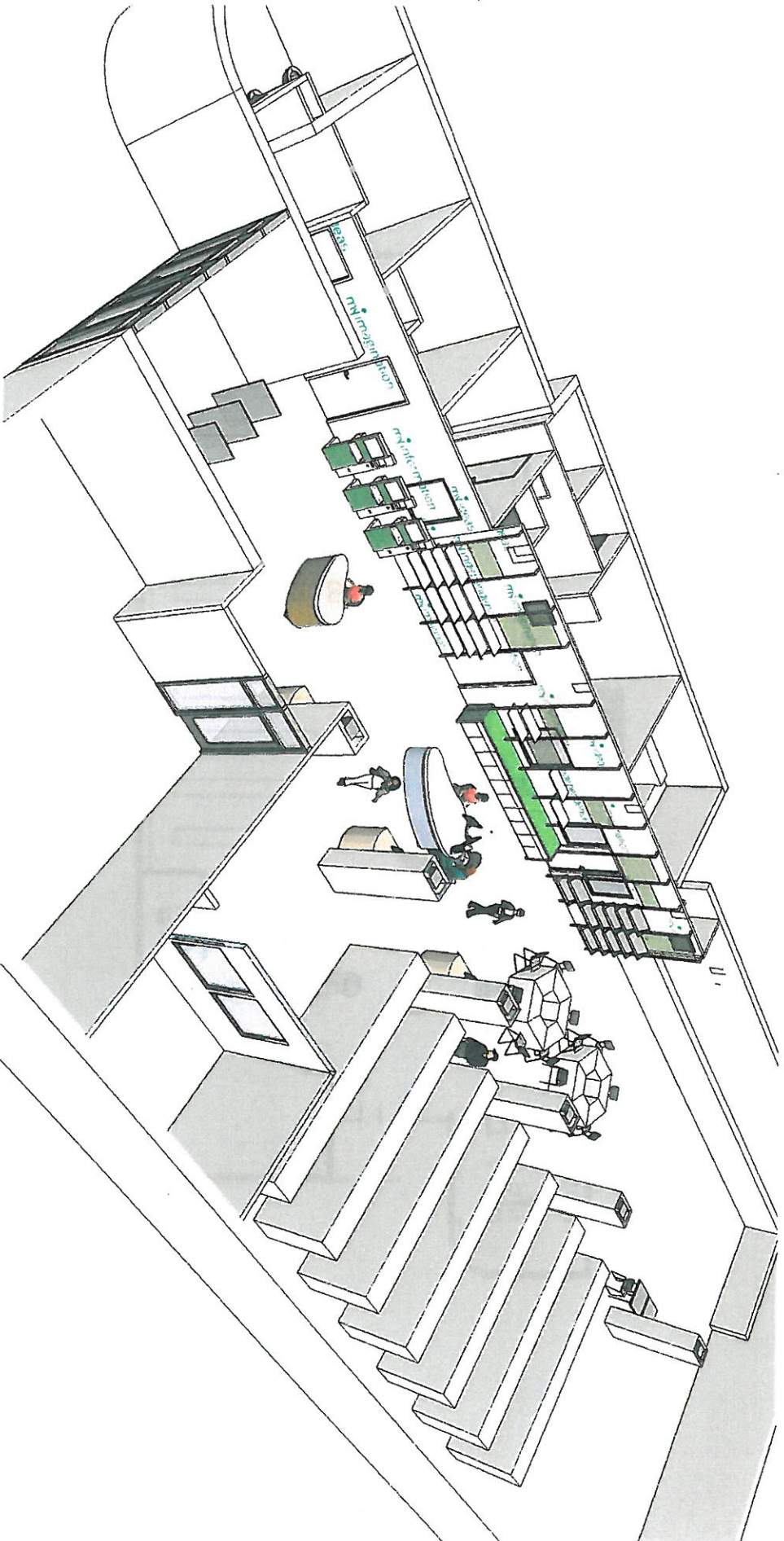


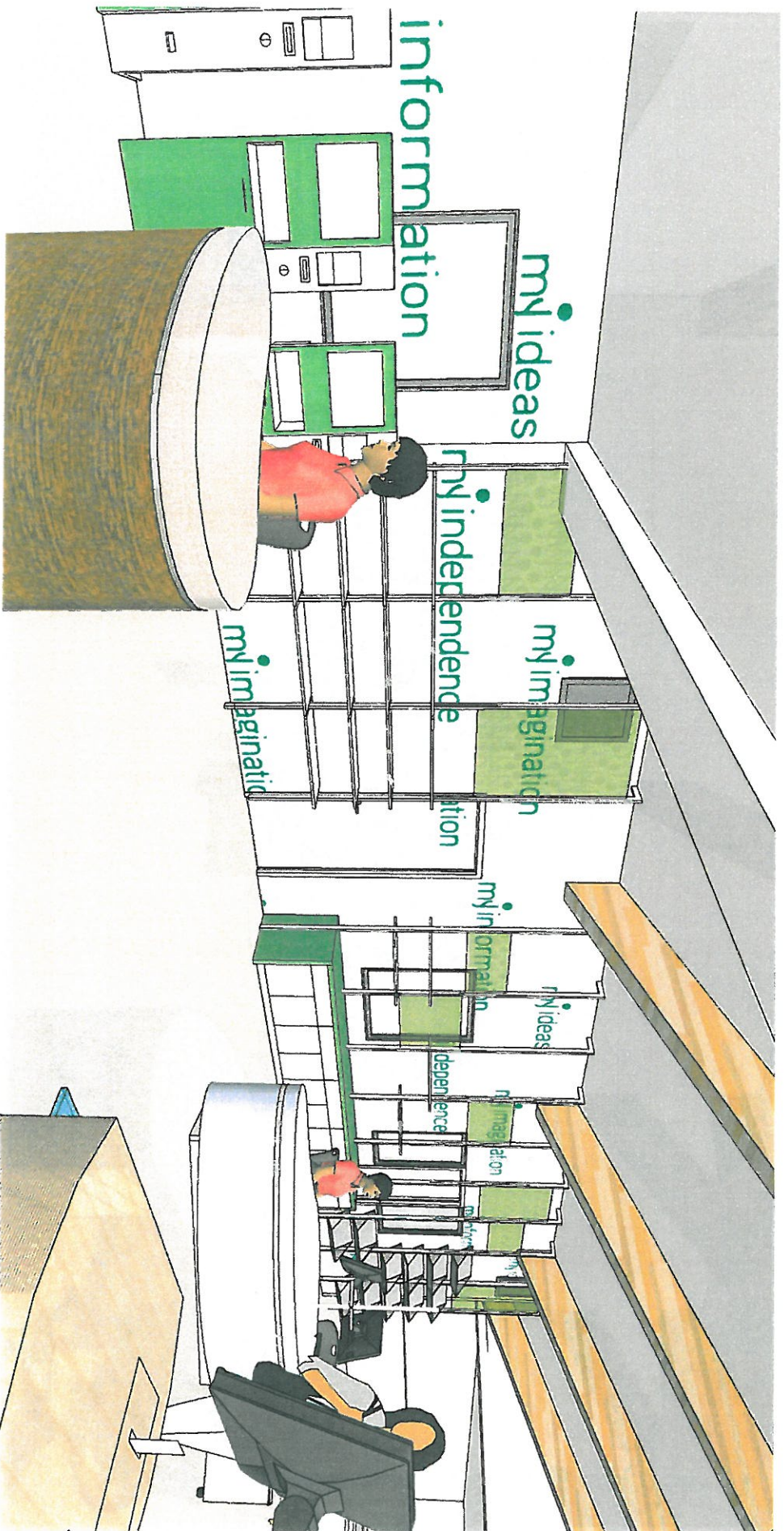
VIEW TOWARDS BRANDING WALL AT SELF-CHECK AREA

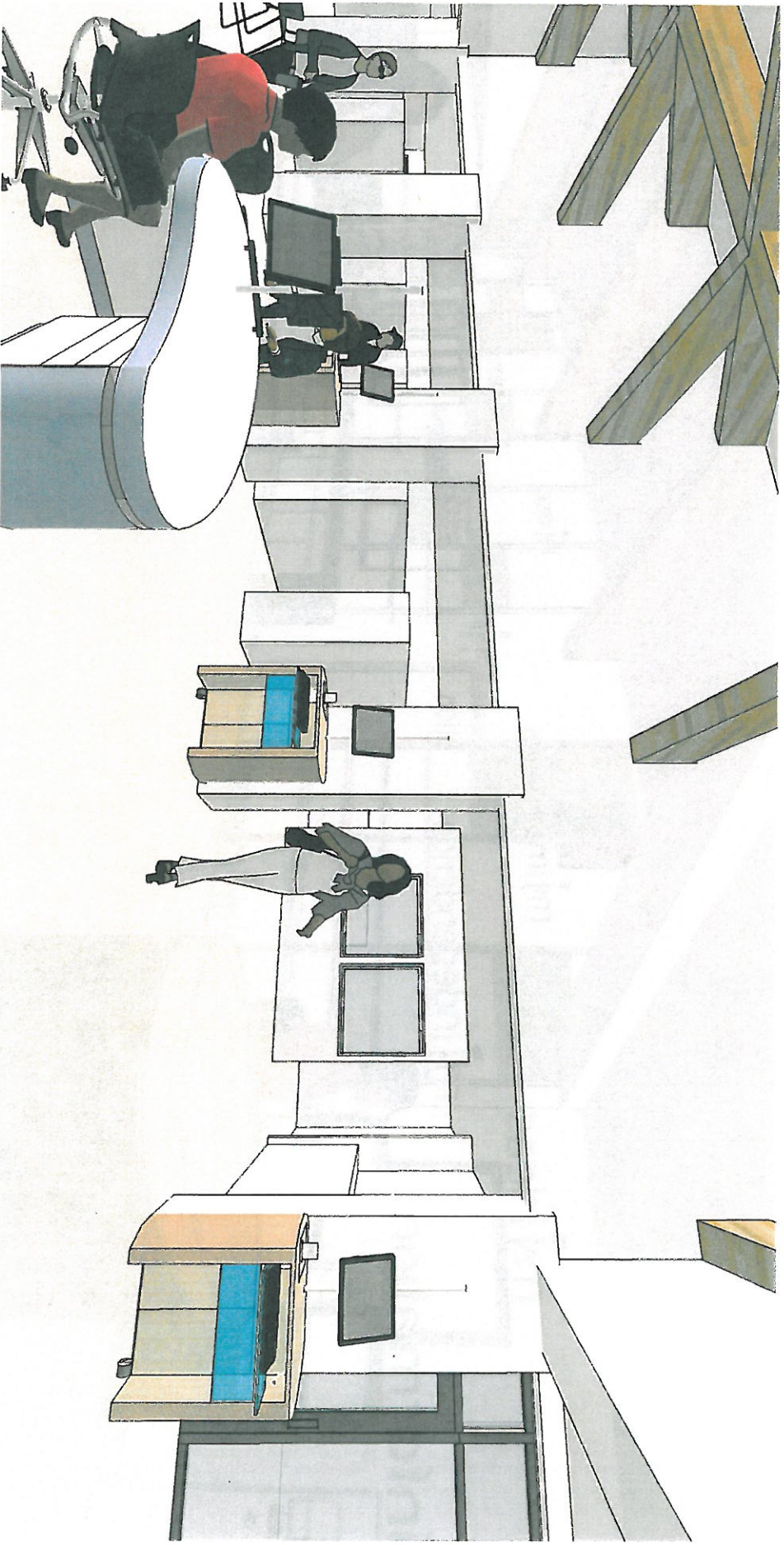


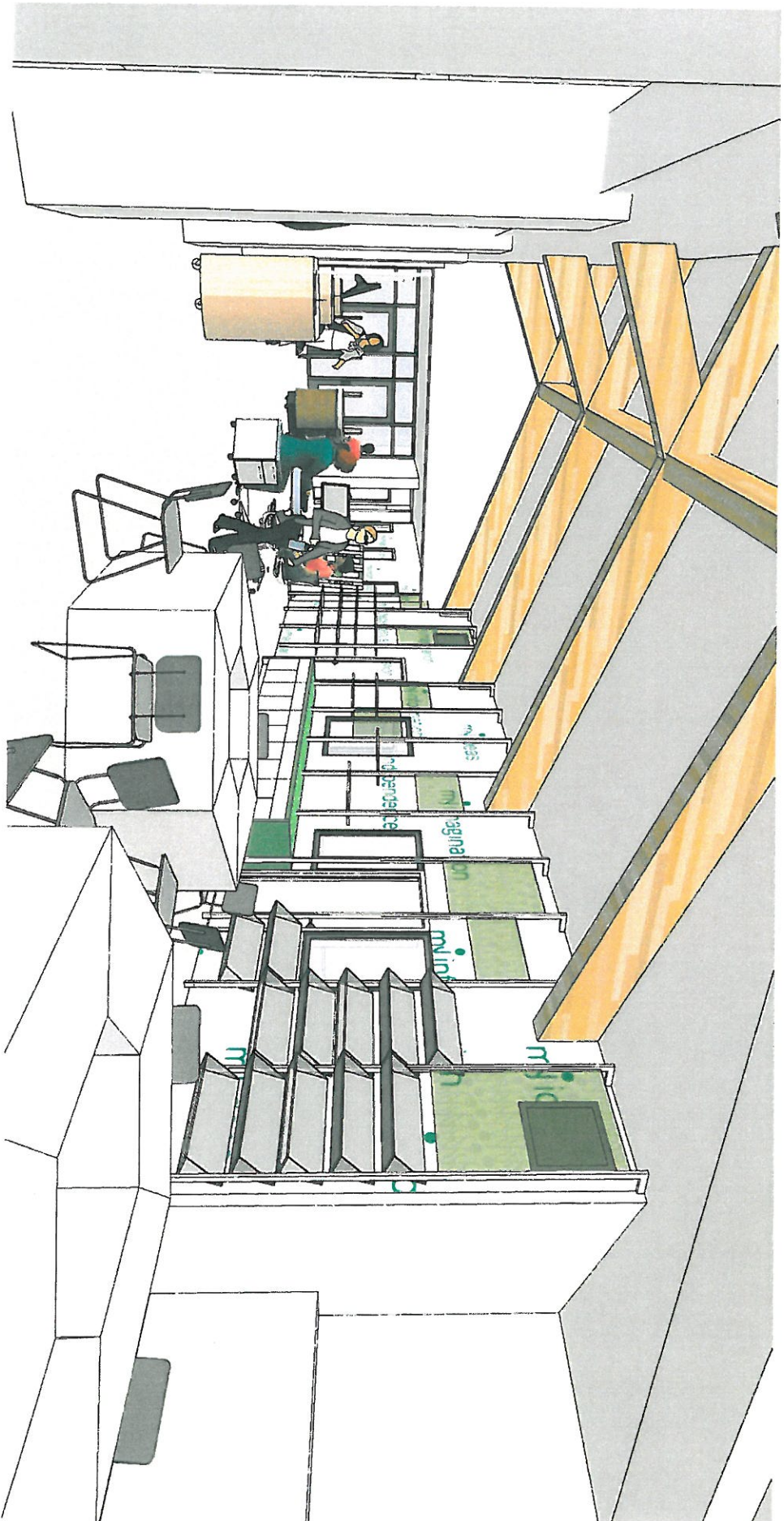
VIEW TOWARD ENTRY FROM COMPUTER CAROUSELS

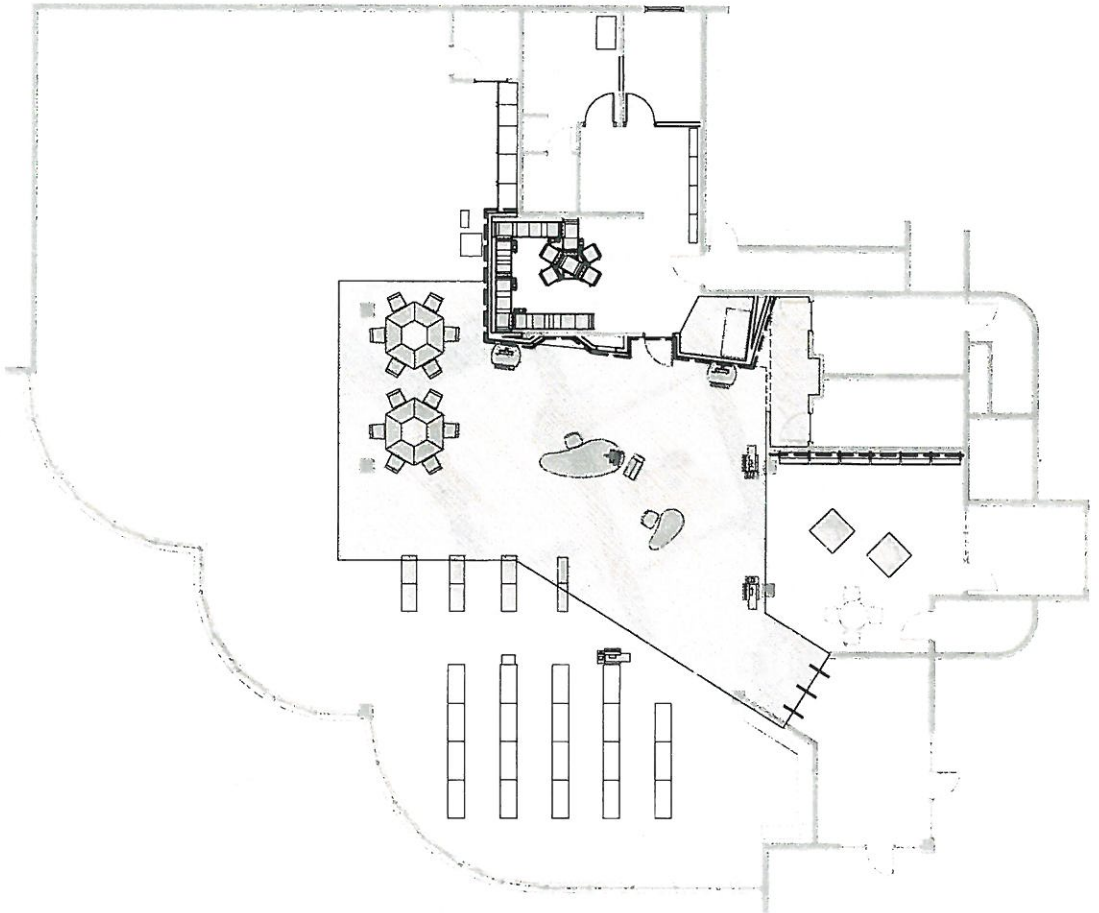


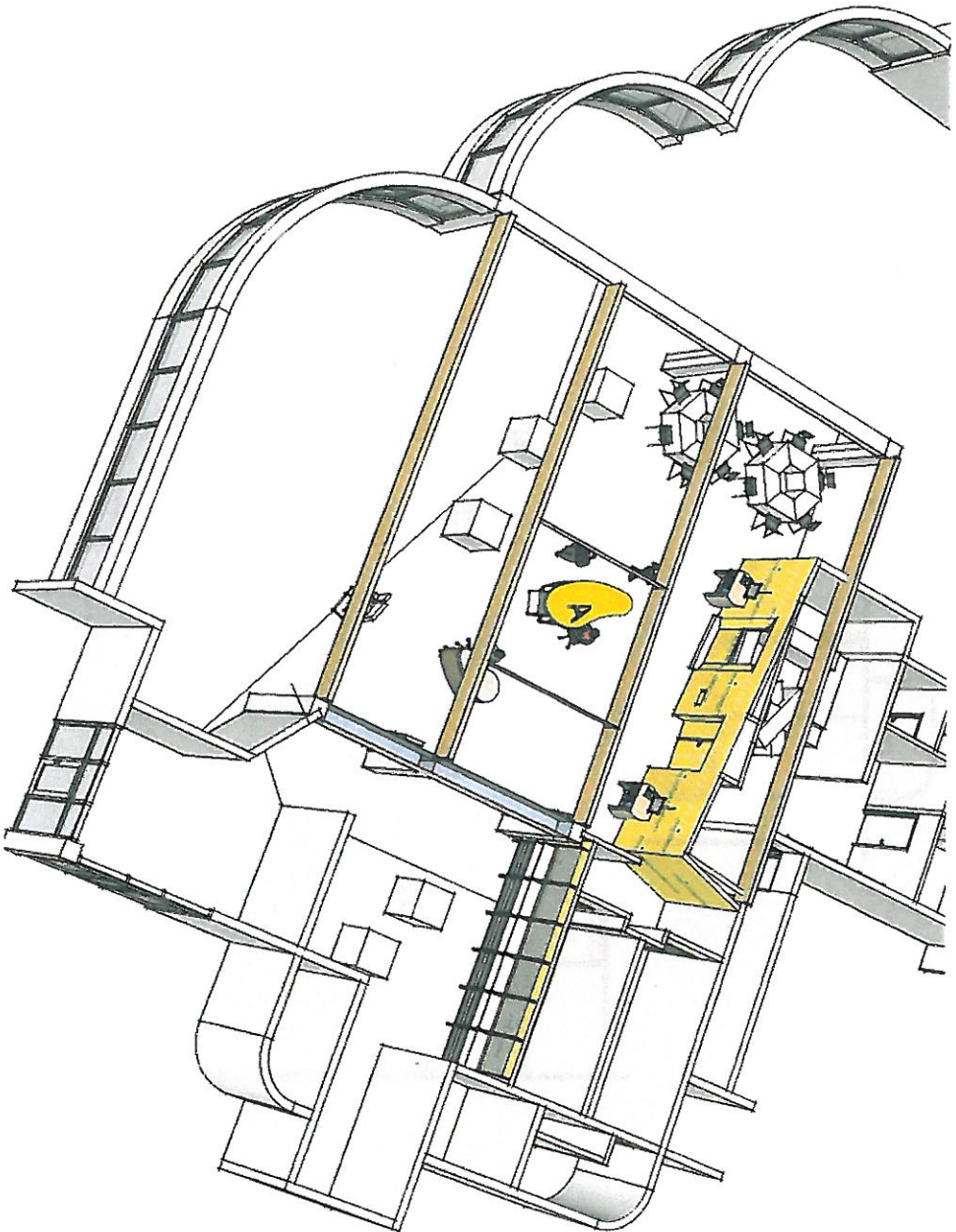




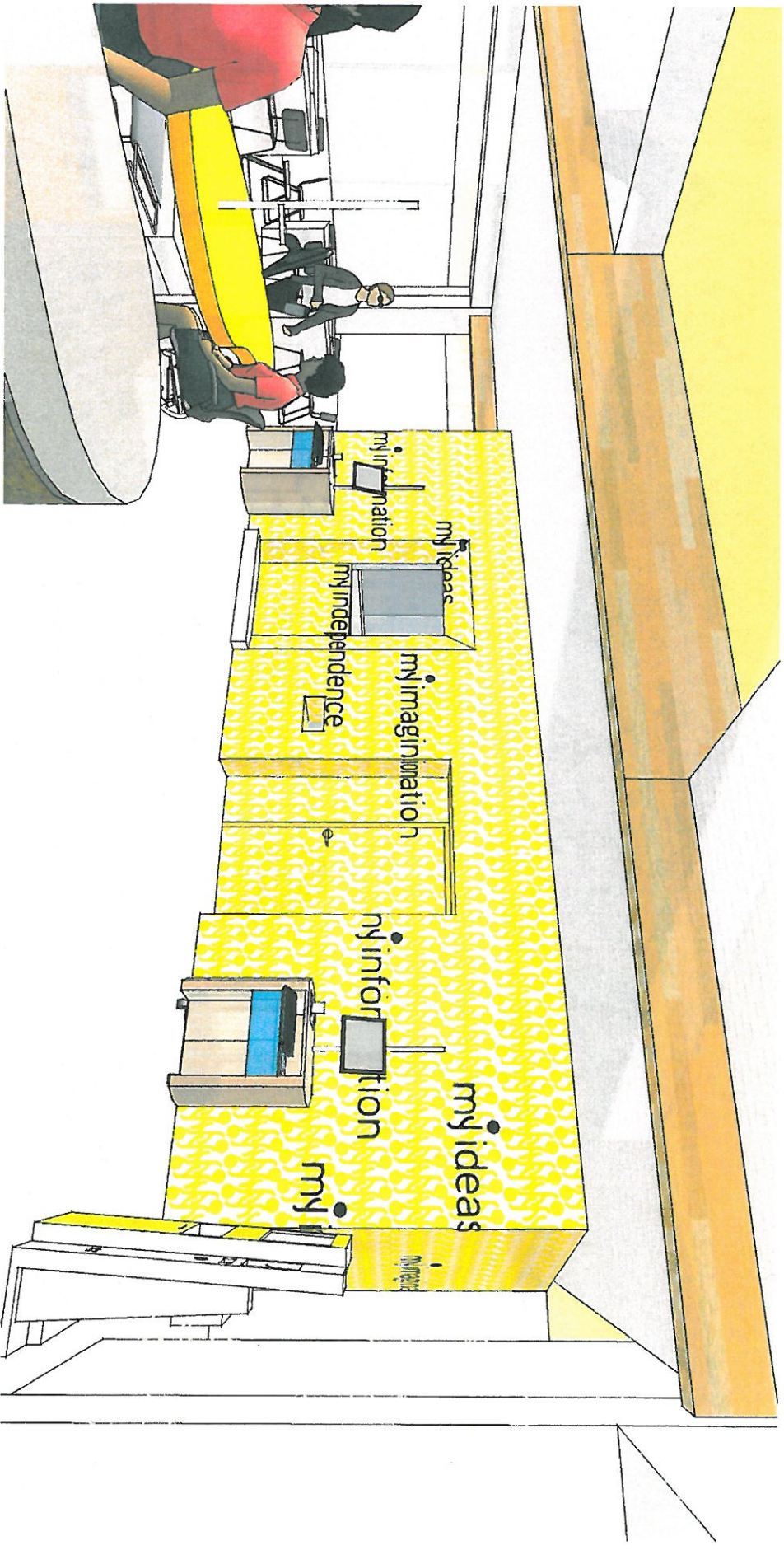










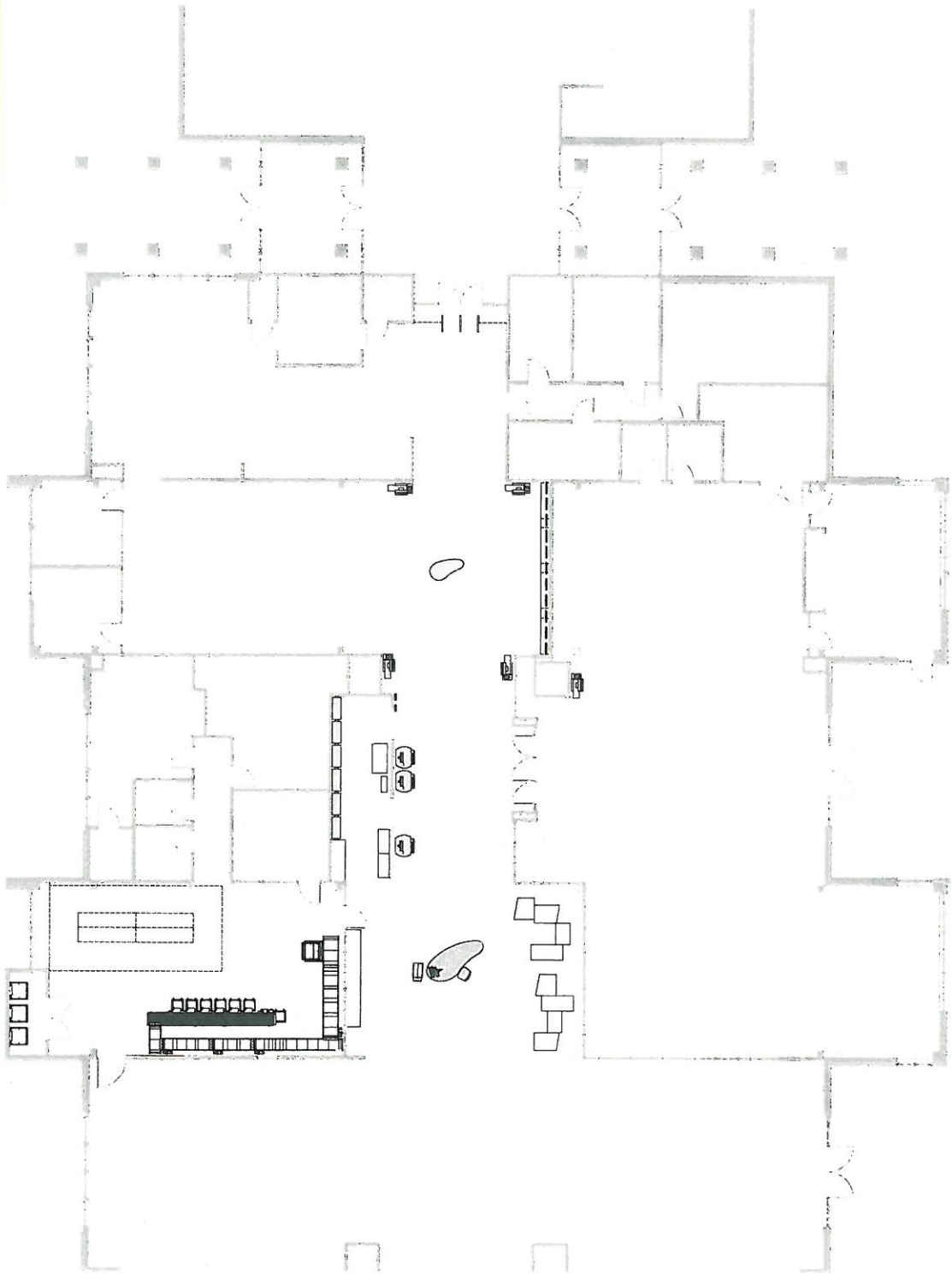


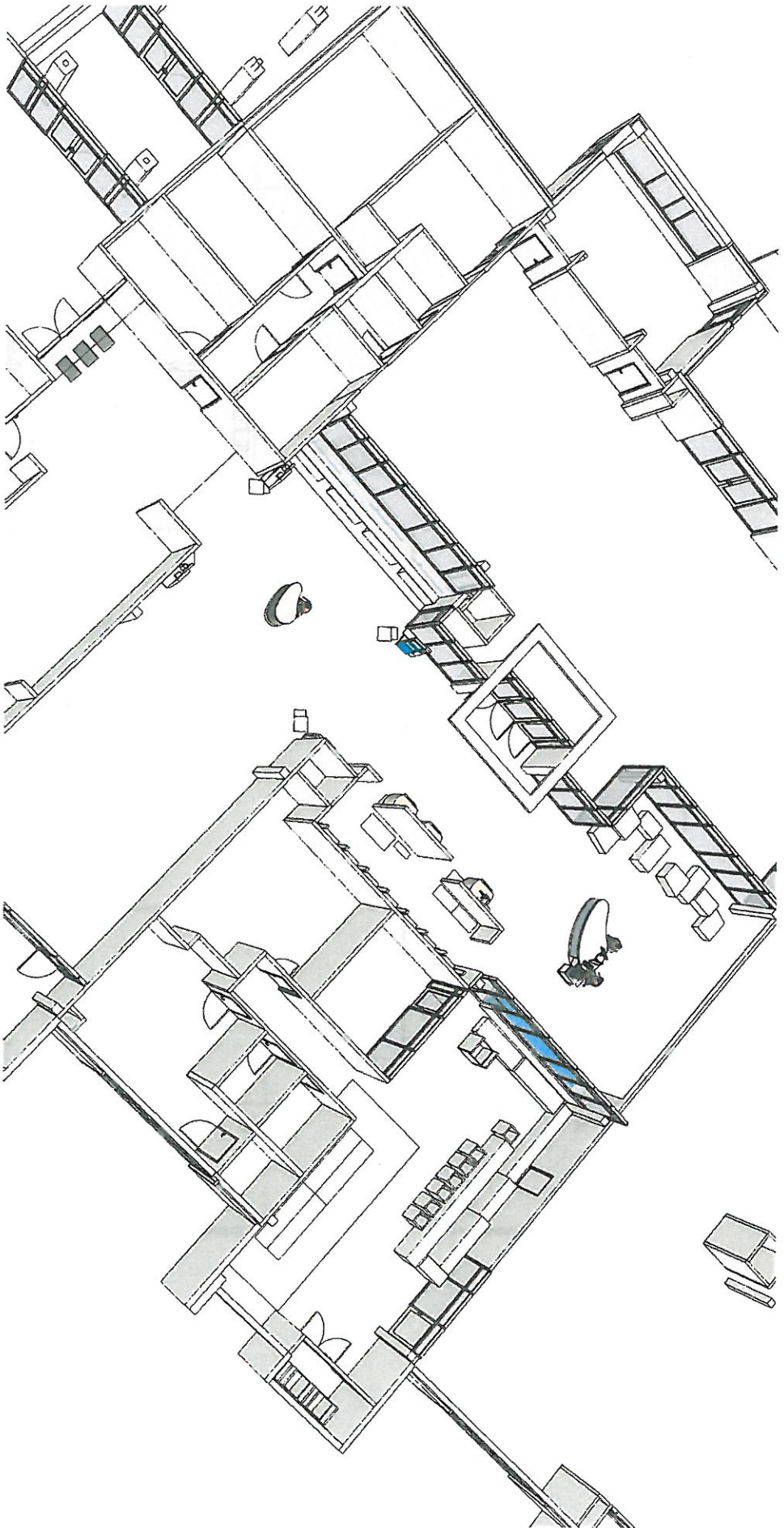


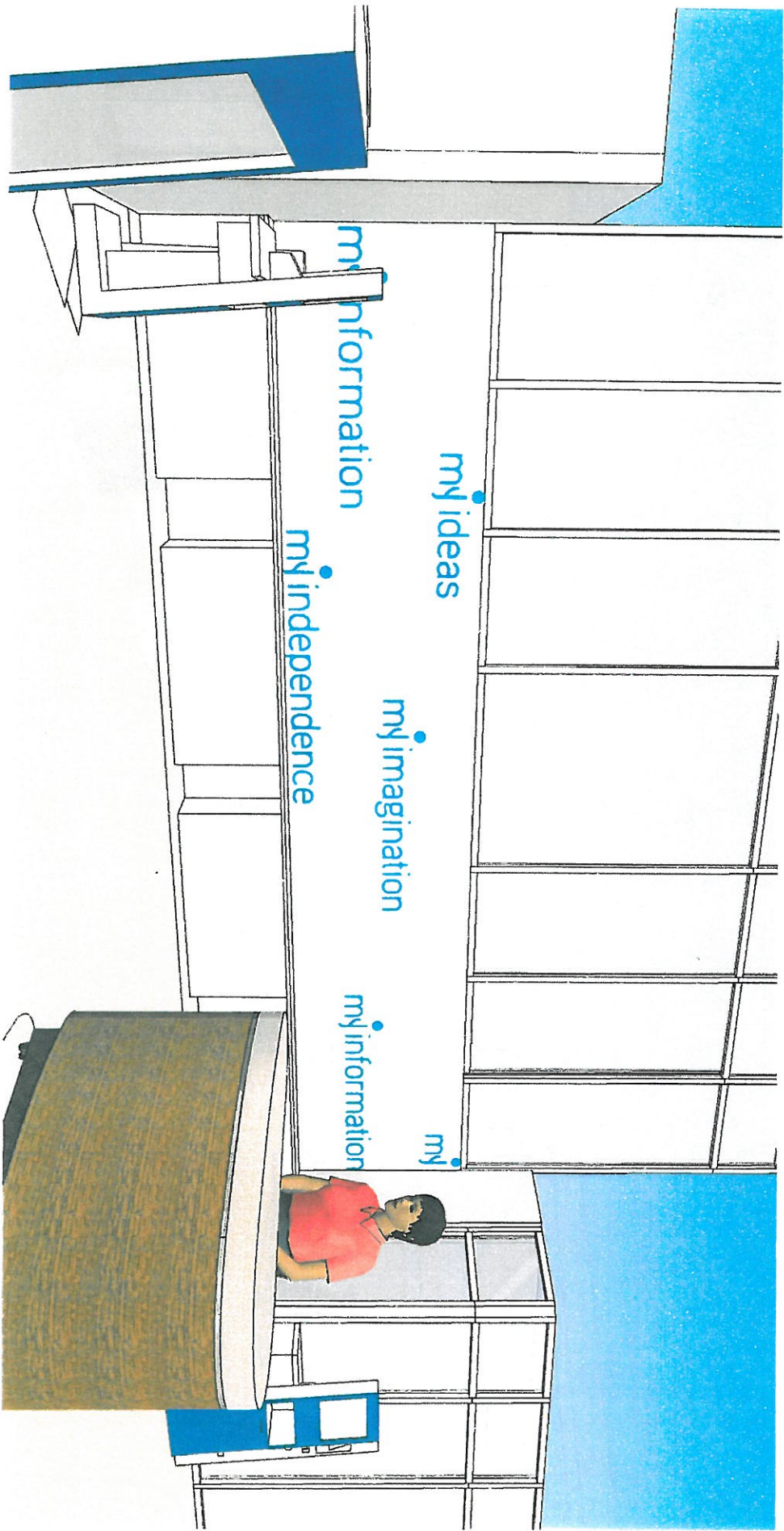


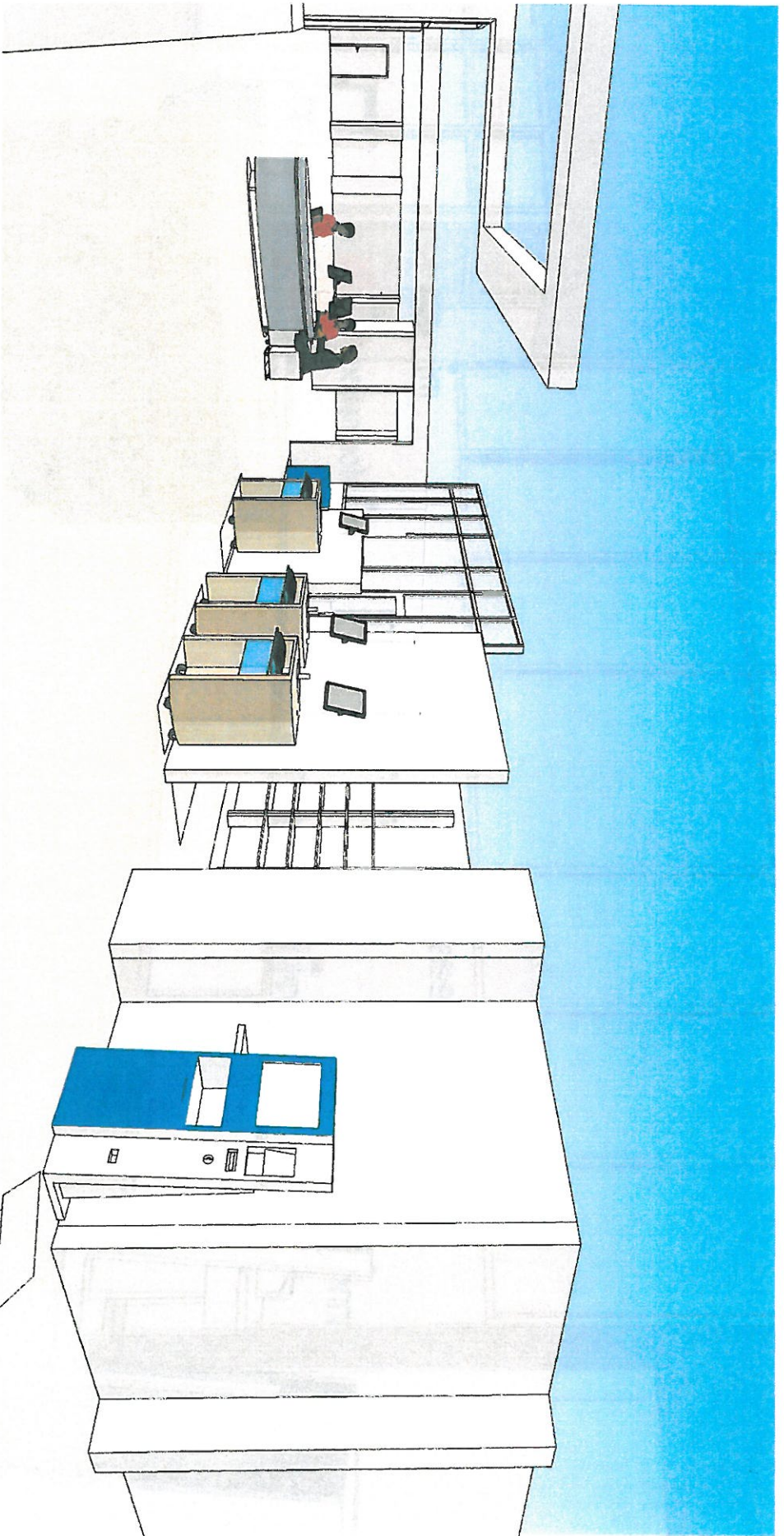
PUEBLO CITY-COUNTY LIBRARY ENHANCEMENT PROJECT : PUEBLO WEST

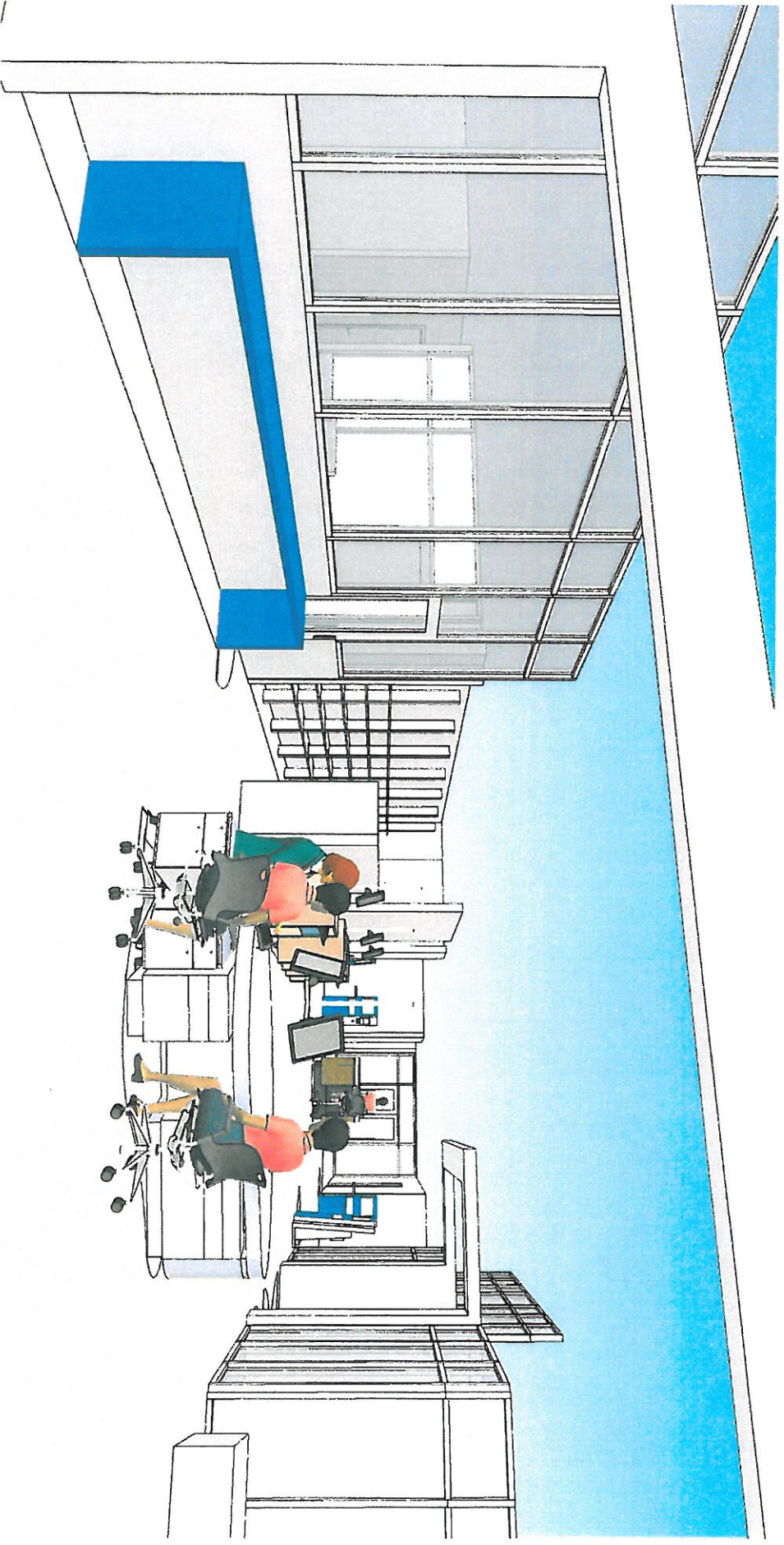
AUGUST 21, 2012

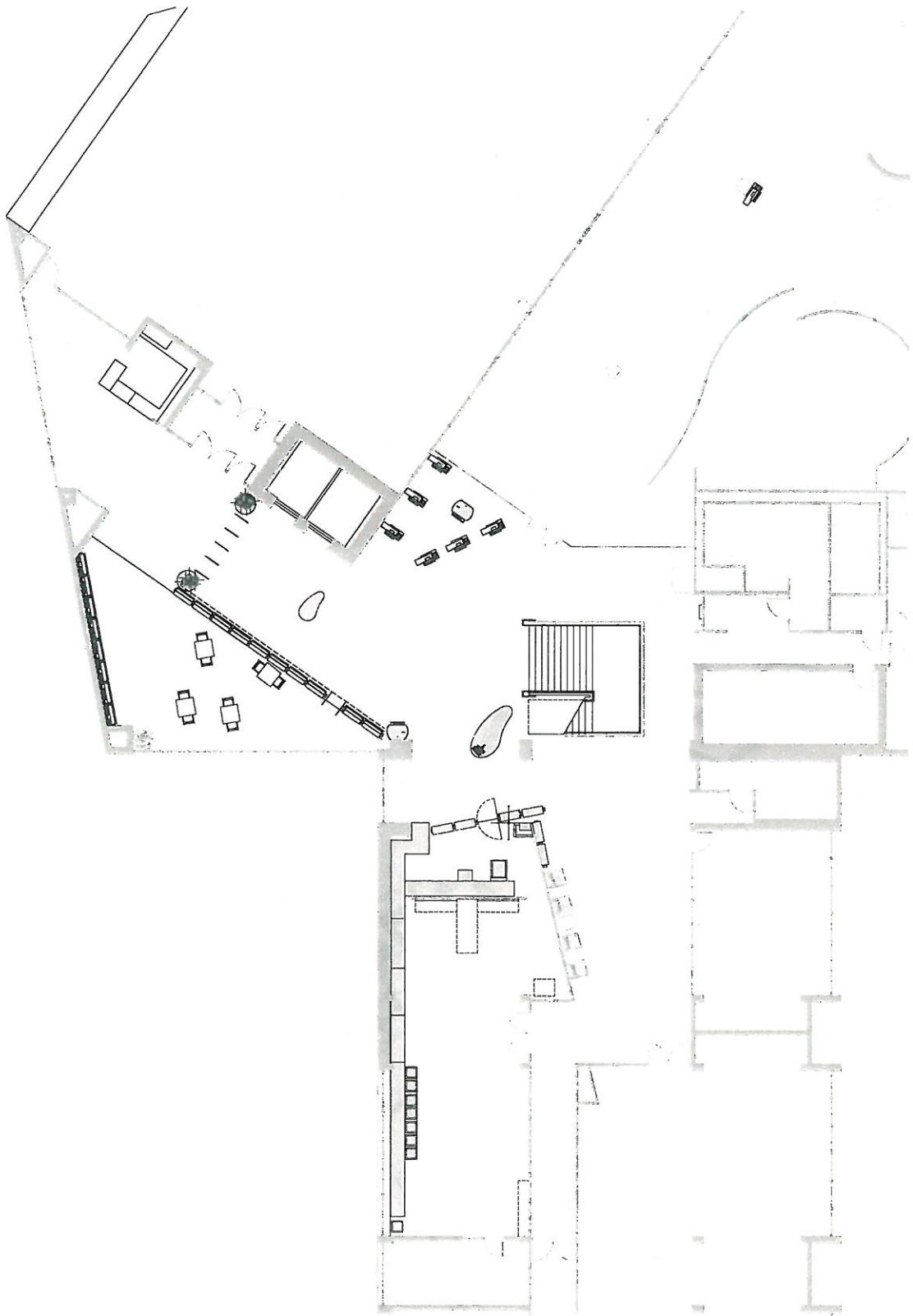


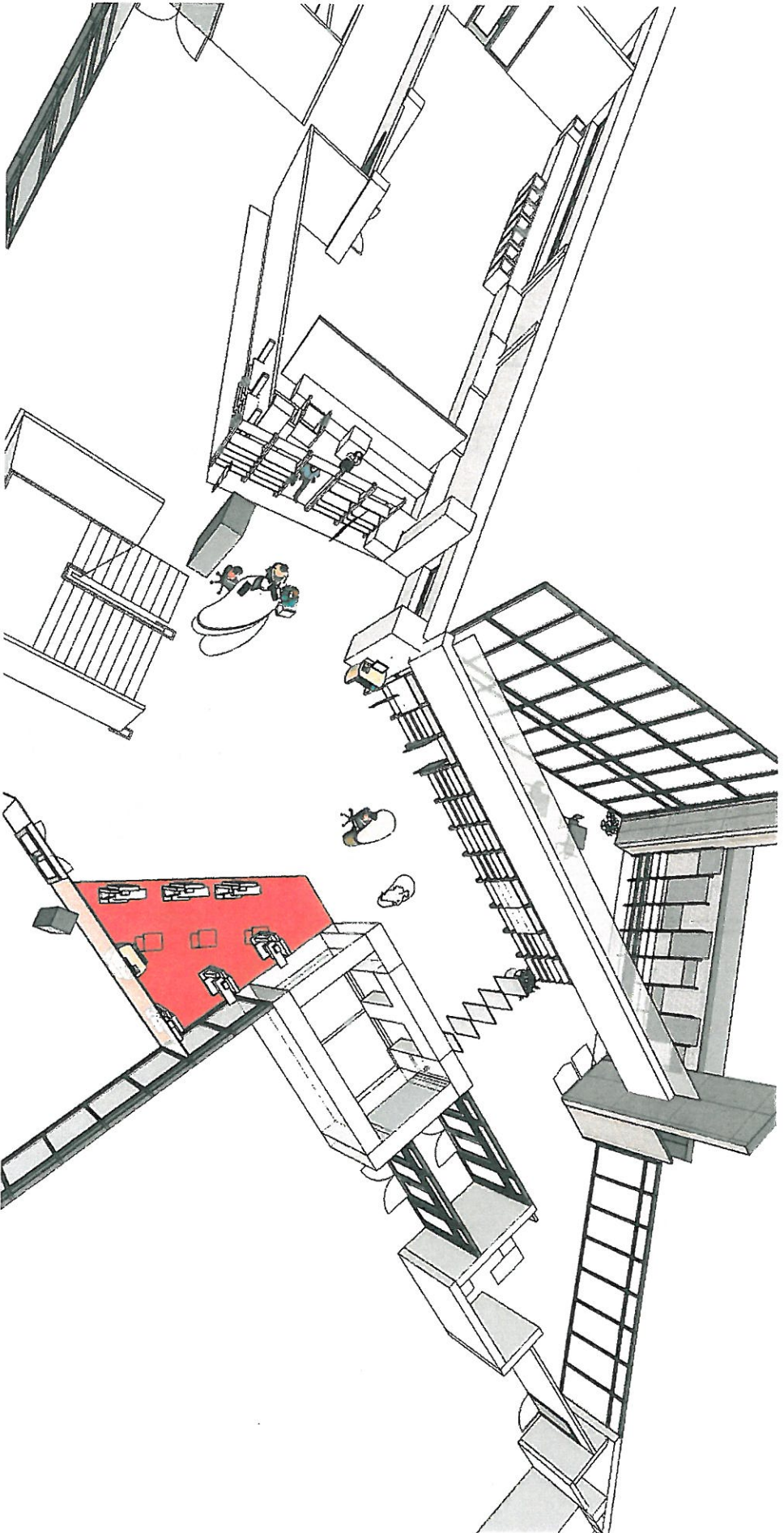


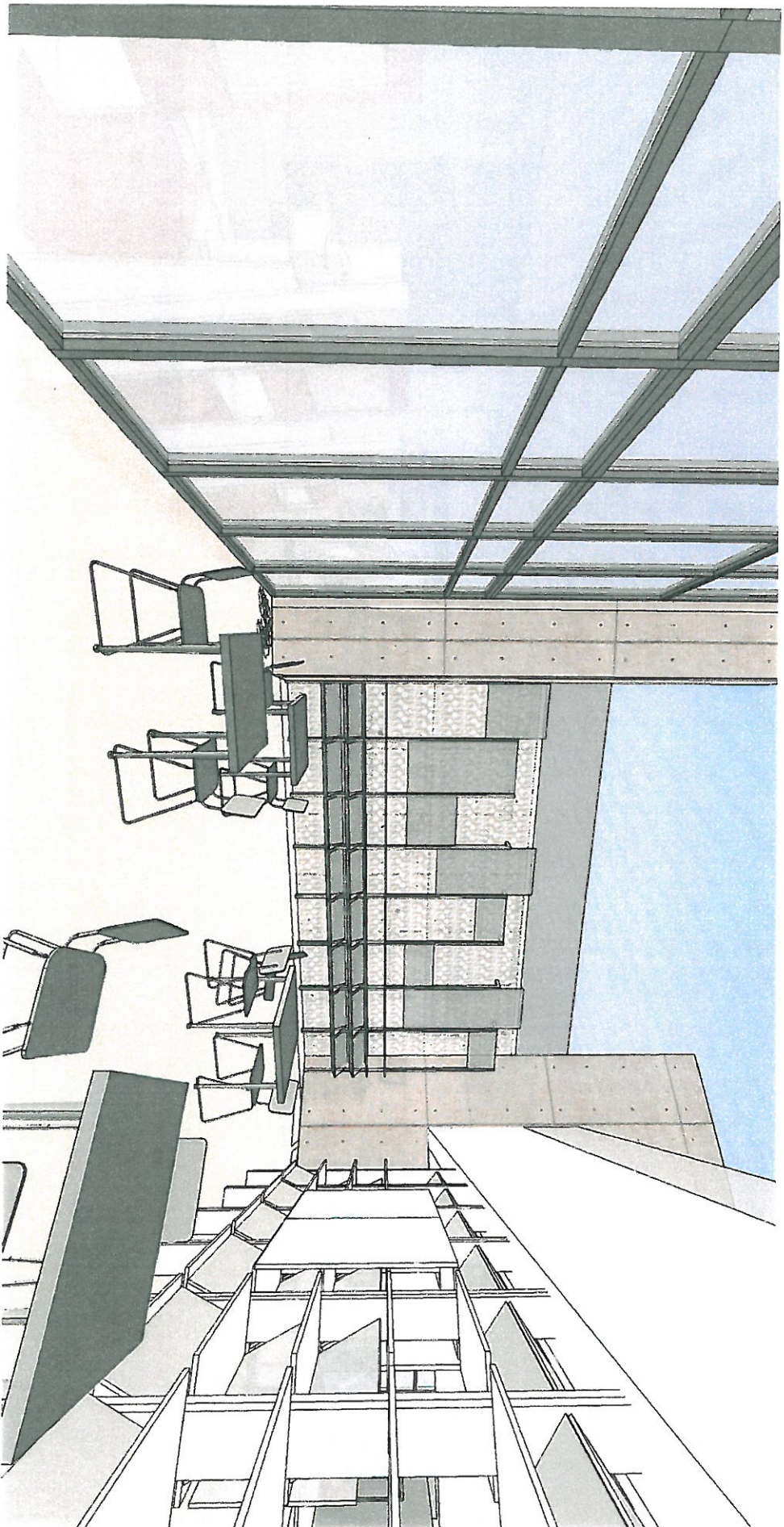


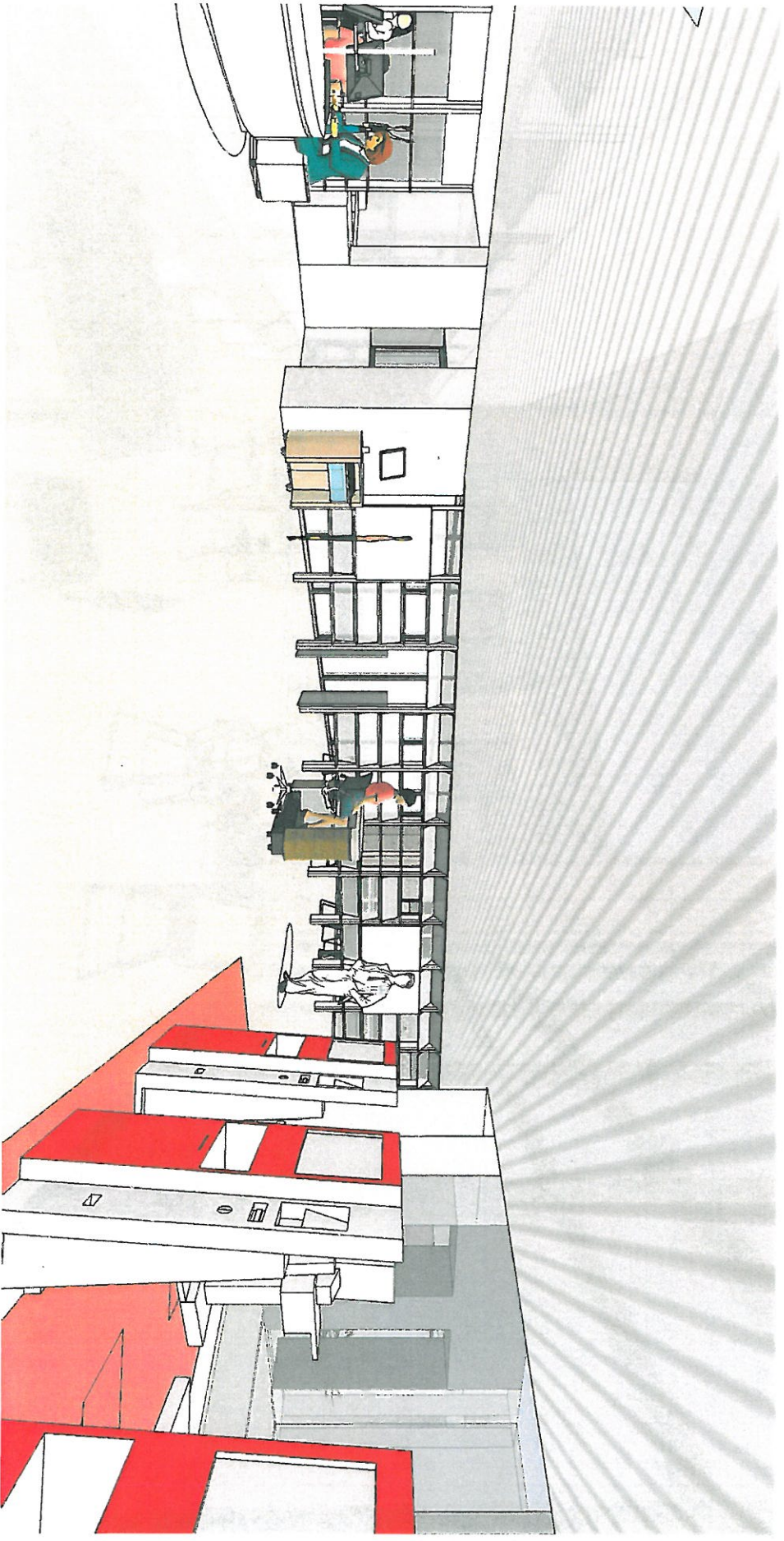


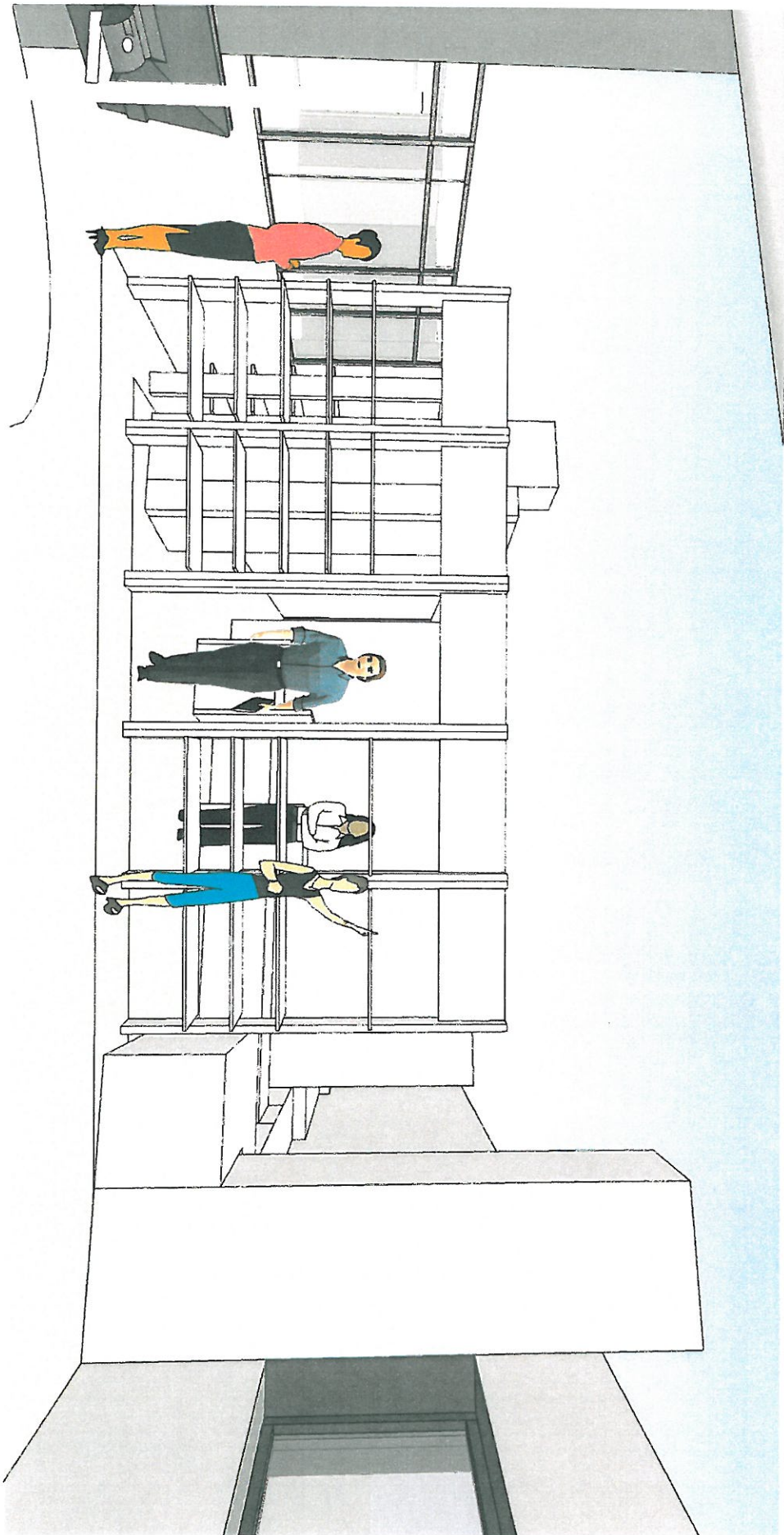












Beehive

The Beehive concept was born, in part, from extensive focus group efforts with Denver Public Library staff. The notion that a library is a meeting place, a forum for the sharing of interesting topics, or a venue to discuss and sometimes debate ideas suggests that the library can be a Beehive of activity. Librarians are seeking ways to create spaces that liberate natural, spontaneous conversations, as well as encourage opportunities for presentations and demonstrations. The beehive is a kit of parts that can be assembled in an endless array of patterns to create such a space.

The Beehive units give the authority to the building operator(s) to decide whether this space is integrated into the general library atmosphere or separated as a stand-alone environment. Due to it's transparency and unique aesthetic, however, even the most distinctly physical separation with the beehive units will establish activity that serves to stimulate the greater environment. This is possible because the beehive units are inherently flexible shelving and display units. The units are inherently double-sided, allowing materials and messages to be displayed in a way that supports and stimulates conversation over interesting, prescient local, national, and global issues.

- A straight partition today can be curved tomorrow
- Acoustical panels or tackable surfaces available
- Shelves can be moved to suit exacting needs
- Signage can easily be added or modified
- User-friendly adjustment by staff



"Our furniture design process is as unique as the furnishings themselves. It begins with research, leads to concepts and theories which are then tested on librarians and library customers. Next we establish a criteria and construct a mock-up. Materials and details are chosen with respect to a budget, and finally the object is realized."

-Justin Martinez, Interior Designer





Jump

The Jump concept was developed in concert with the Poudre River Public Library District. A Jump station puts librarians in the natural traffic patterns that are emerging within the continuously evolving spaces defined by mobile units in the contemporary library environment. These pieces are not designed to necessarily be staffed full time, but instead establish a jumping off point where a customer knows they can attract the attention of a staff member with questions.

The Jump effectively expands the potential interaction between librarians and their customers and ensures a quality customer service experience for all. It can easily be moved about the library on casters, while the power/data cords are concealed beneath the unit. The monitor, when not in use by a staff member, can display library information as a screen saver. As with all Supple units the Jump finish palette can be tailored to suit any library environment.

- Standing or seated stations
- Fully adjustable swivel/pivot monitor arm
- Expansive counter for layout space
- Lockable storage to hide clutter
- Keyboard tray option
- Multiple signage options to identify station from afar



"I totally love those jumps, jellies, and bugs, and the unique shelving. They are functional, yet airy and fresh. I can envision a contemporary library that replaces traditional shelving with your display units throughout. This would lend itself to more "zones" and browsing."

- Jenny LaPerriere, Senior Librarian Denver Public Library

