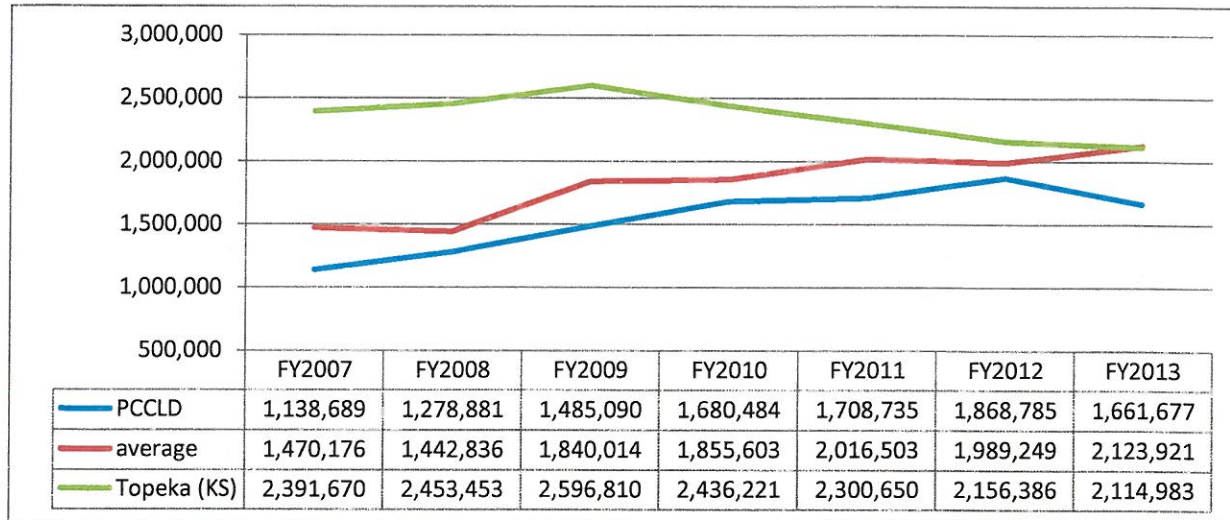


## 2014 Key Results

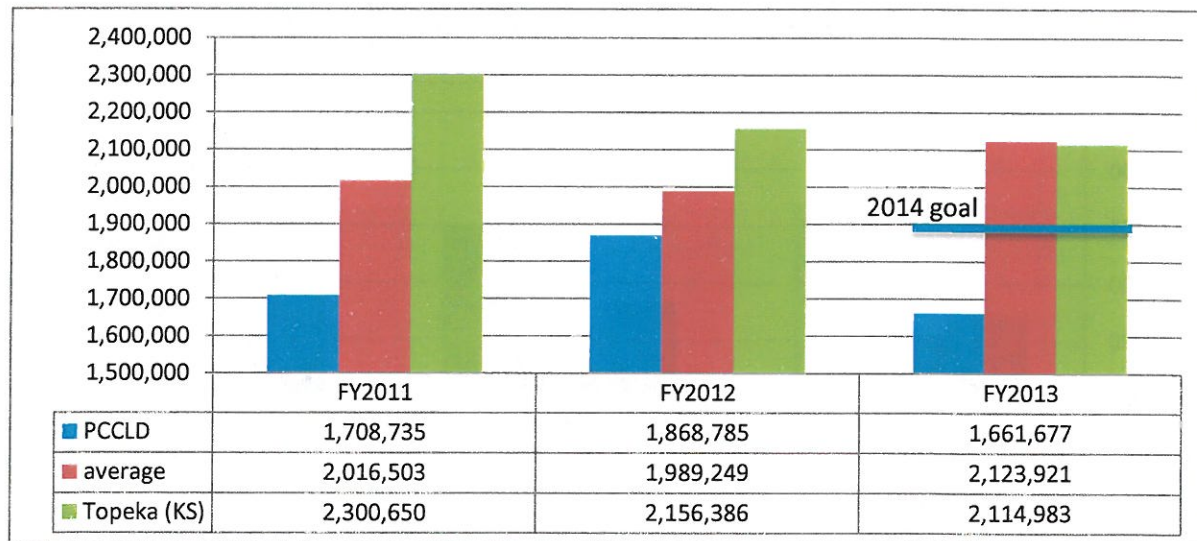
### Circulation



Topeka and Shawnee County Public Library most closely outperformed PCCLD in FY2012.

Average and Topeka FY2013 figures are estimates based on average yearly % change.

	FY2008	FY2009	FY2010	FY2011	FY2012	FY2013	AVERAGE
PCCLD	12.31%	16.12%	13.16%	1.68%	9.37%	-11.08%	6.93%
average	-1.86%	27.53%	0.85%	8.67%	-1.35%	6.77%	6.77%
Topeka (KS)	2.58%	5.84%	-6.18%	-5.56%	-6.27%	-1.92%	-1.92%



PCCLD's 2013 goal for Circulation was 2,000,000, a 7% increase over FY2012.

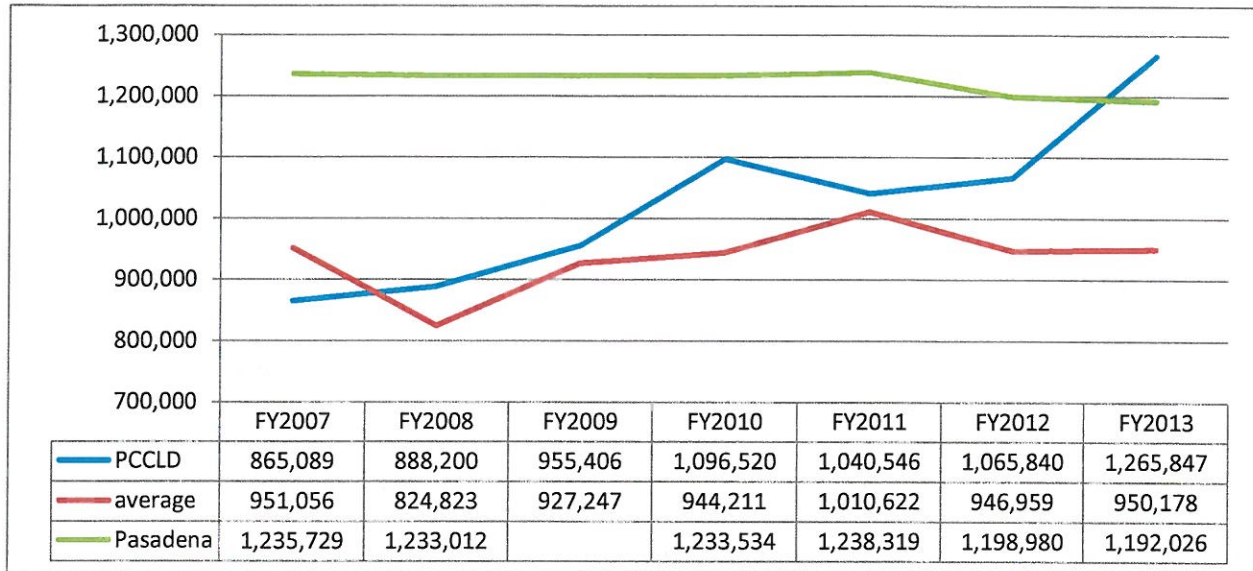
A 7% increase over FY2013 activity = 1,777,994.

A 6.93% average PCCLD increase over FY2013 activity = 1,776,831.

A 14.3% increase over FY2013 to maintain the previous goal = 1,900,000.

## 2014 Key Results

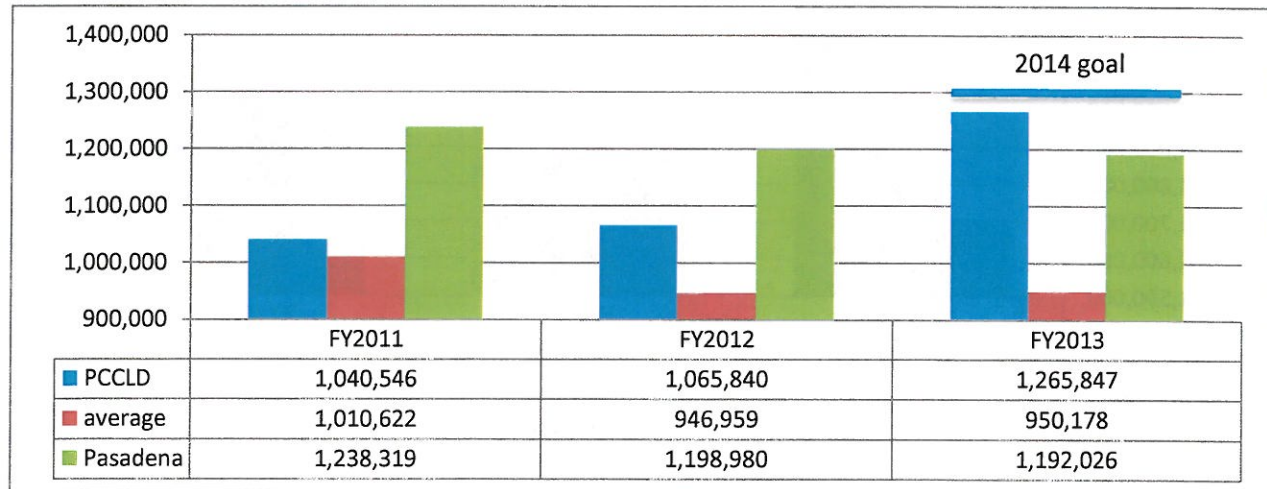
### Visits



Our closest competitor for Visits in FY 2012 is Pasadena Public Library.

*Average and Pasadena FY2013 figures are estimates based on average yearly % change.*

	FY2008	FY2009	FY2010	FY2011	FY2012	FY2013	AVERAGE
PCCLD	2.67%	7.57%	14.77%	-5.10%	2.43%	18.77%	6.85%
average	-13.27%	12.42%	1.83%	7.03%	-6.30%	0.34%	0.34%
Pasadena PL (CA)	-0.22%	0.02%	0.02%	0.39%	-3.18%	-0.58%	-0.59%



PCCLD's 2013 goal for Visits was 1,100,000, a 3.2% increase over FY2012.

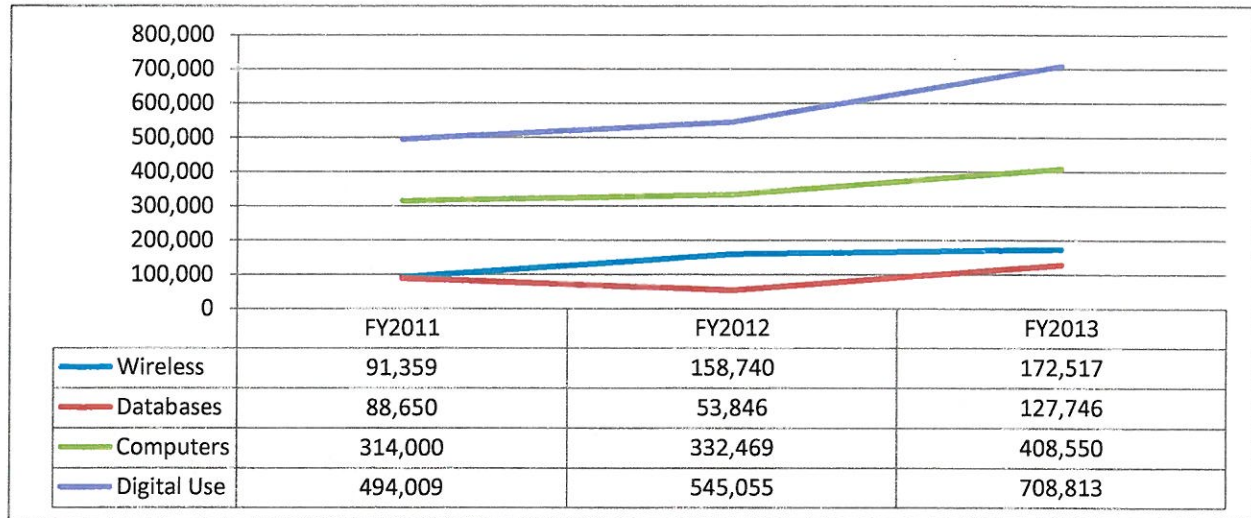
A 3.2% increase over FY2013 = 1,306,354.

A 6.85% average PCCLD increase over FY2013 = 1,352,558.

Ann Arbor library is the next highest performer in our peer group with 1,687,975 in FY2012.

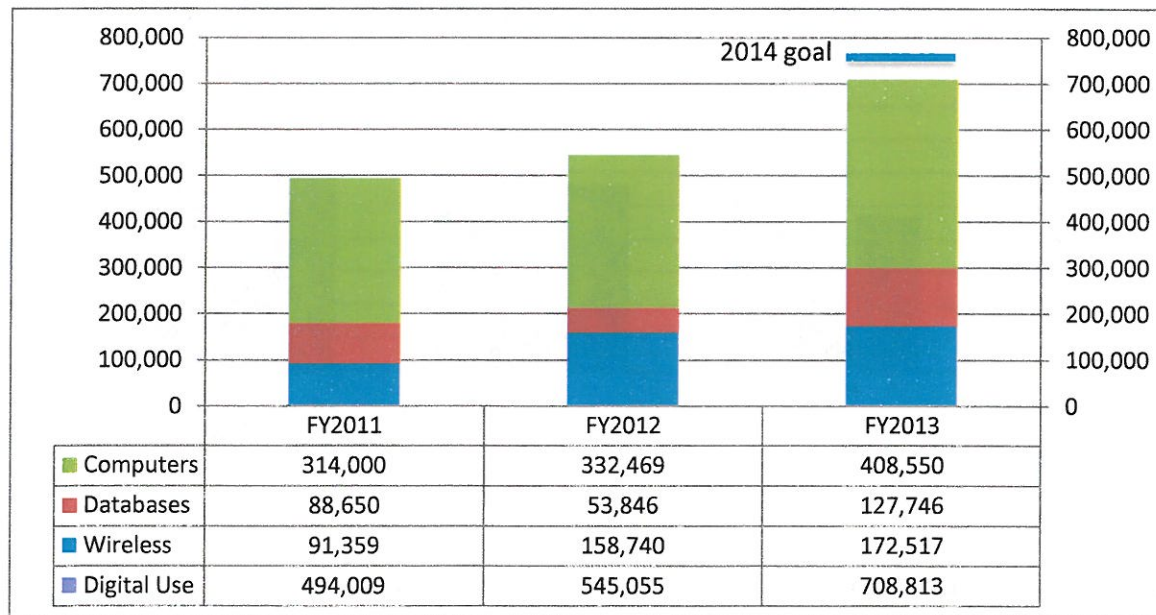
## 2014 Key Results

### Digital Use



Each total is a count of sessions of activity.

	FY2012	FY2013	AVERAGE
Wireless	73.75%	8.68%	41.22%
Databases	-39.26%	137.24%	48.99%
Computers	5.88%	22.88%	14.38%
Total Digital Use	10.33%	30.04%	20.19%



PCCLD has experienced a yearly average increase of 20.19% in Digital Use.

A 20.19% increase over FY 2013 = 851,922.

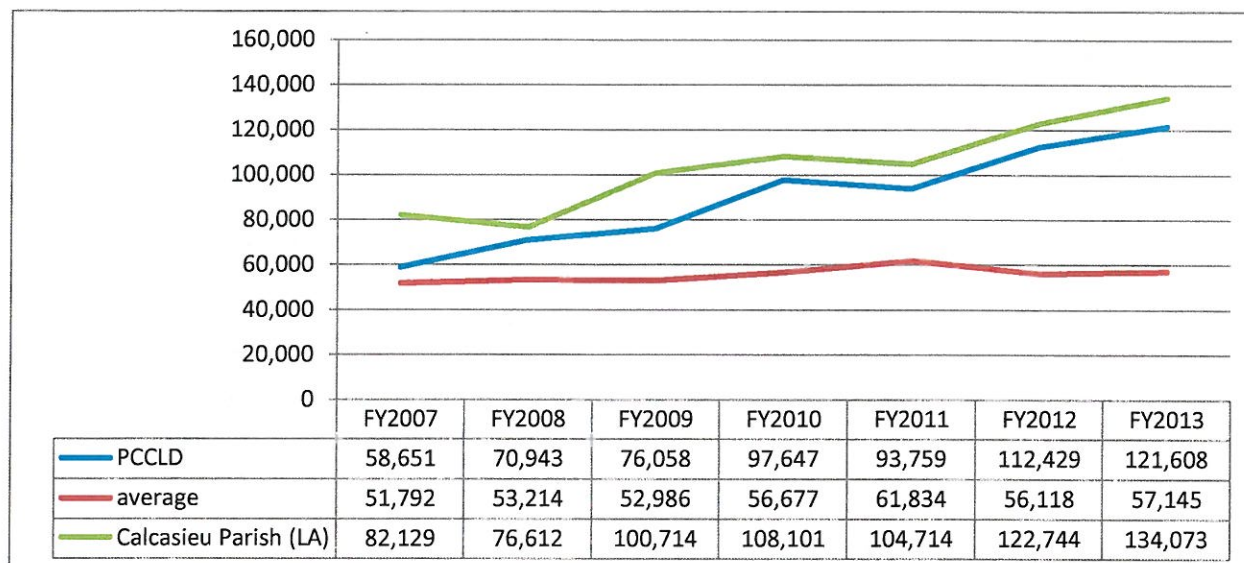
86024

A 5.8% increase over FY2013 = 750,000.



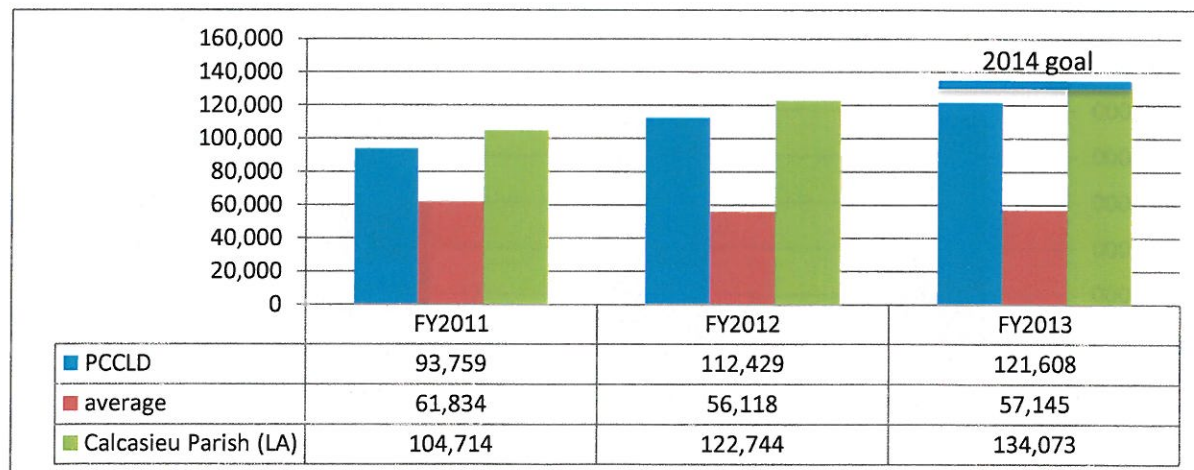
## 2014 Key Results

### Program Attendance



The library with the best attendance in our peer group in 2012 and 2011 was Calcasieu Parish in Louisiana. Average and Calcasieu FY2013 figures are estimates based on average yearly % change.

	FY2008	FY2009	FY2010	FY2011	FY2012	FY2013	AVERAGE
PCCLD	20.96%	7.21%	28.38%	-3.98%	19.91%	8.16%	13.44%
average	2.75%	-0.43%	6.97%	9.10%	-9.24%	1.83%	1.83%
Calcasieu Parish (LA)	-6.72%	31.46%	7.33%	-3.13%	17.22%	9.20%	9.23%



PCCLD's 2013 goal for Program Attendance was 120,000, a 6.7% increase over 2012 activity.

A 6.7% increase over our own FY2013 activity = 132,160.

A 13.44% PCCLD average increase over our FY2013 activity = 137,952.

A 11% increase over FY2013 to become the top performer = 135,000.

Vendors	Dell	VLCM (HP)	CSC (Lenovo)
<b>Pre Qualifiers</b>			
(1.C) Submitted Proposal On time & as Requested	Yes	Yes	Yes

**Ratings****(8.A) Minimum  
Requirements**

	<b>OptiPlex 7010n</b>	<b>ProDesk 600 G1</b>	<b>M73</b>
Business Class	Yes	Yes	Yes
Case	DT	SFF	Tiny
CPU	3.2 i5-3470	3.2 i5-4570	2.9 i5-4570t
RAM	4 (4x1 3 open)	4 (4x1 3 open)	4 (4x1 1 open)
USB 3.0	yes front	yes front	yes front
Gigabit NIC	yes	yes	yes
DVD	yes	yes	yes
MMC Reader	?	yes 14 in 1	?
Hard Drive	250GB	500GB	500GB SSHD
Graphics	Intel integrated	integrated	Intel integrated
22" Monitor	yes	yes \$ 137.23	yes \$158
Warranty	3 yr	3yr	3yr
<b>(8.C) Delivery</b>	-	3/17/2014	3/17/2014
<b>Per System</b>	\$757.68	\$711.70	\$881.00
<b>Qty of 150 system =</b>	\$113,652.00	\$106,755.00	\$124,200.00
Customer Rating	4/5 Spiceworks	4/5 Spiceworks 4.5/5 CDW	no ratings even on Lenovo.com

# Public PC Replacement

## Recommendation:

- Select Vendor VLCM (HP ProDesk 600 G1)
- Purchase 170 PCs (150 + 12 + 8)
- Purchase 162 Monitors

**150 Complete systems**

**\$106,755.00**

**Additional 12 Complete systems**

**\$8,540.40**

**Spare 8 PCs (5% break/fix)**

**\$4,595.76**

---

**Total of 170 PCs and 162 Monitors**

**\$119,891.16**



# Public PC Replacement

# Public PC Replacement

- RFP Released January 24th
- Requested 150 Computers
- Min. Hardware Requirements
- 3 Bidders Responded
- Budget \$120,000

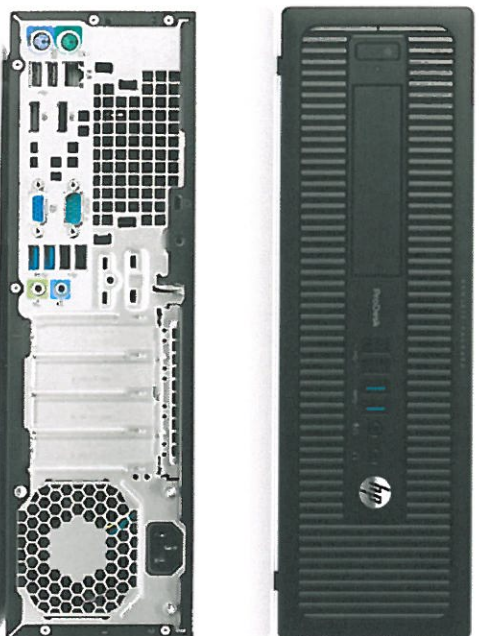


# Public PC Replacement

Vendors	Dell	VLCM (HP)	CSC (Lenovo)
Bidded Model	OptiPlex 7010n	ProDesk 600 G1	M73
CPU	3.2 i5-3470	3.2 i5-4570	2.9 i5-4570t
MMC Reader	?	yes 14 in 1	?
22" Monitor	yes	yes \$ 137.23	yes \$158
(8.C) Delivery	-	3/17/2014	3/17/2014
Per System	\$757.68	\$711.70	\$881.00
Qty of 150 system =	\$113,652.00	\$106,755.00	\$124,200.00

# Public PC Replacement

**HP ProDesk 600 G1  
SFF**



**HP ProDesk P221**





# Public PC Replacement

## Recommendation:

- Select Vendor VLCM (HP ProDesk 600 G1)
- Purchase 170 PCs (150 + 12 + 8)
- Purchase 162 Monitors

**150 Complete systems**

**\$106,755.00**

**Additional 12 Complete systems**

**\$8,540.40**

**Spare 8 PCs (5% break/fix)**

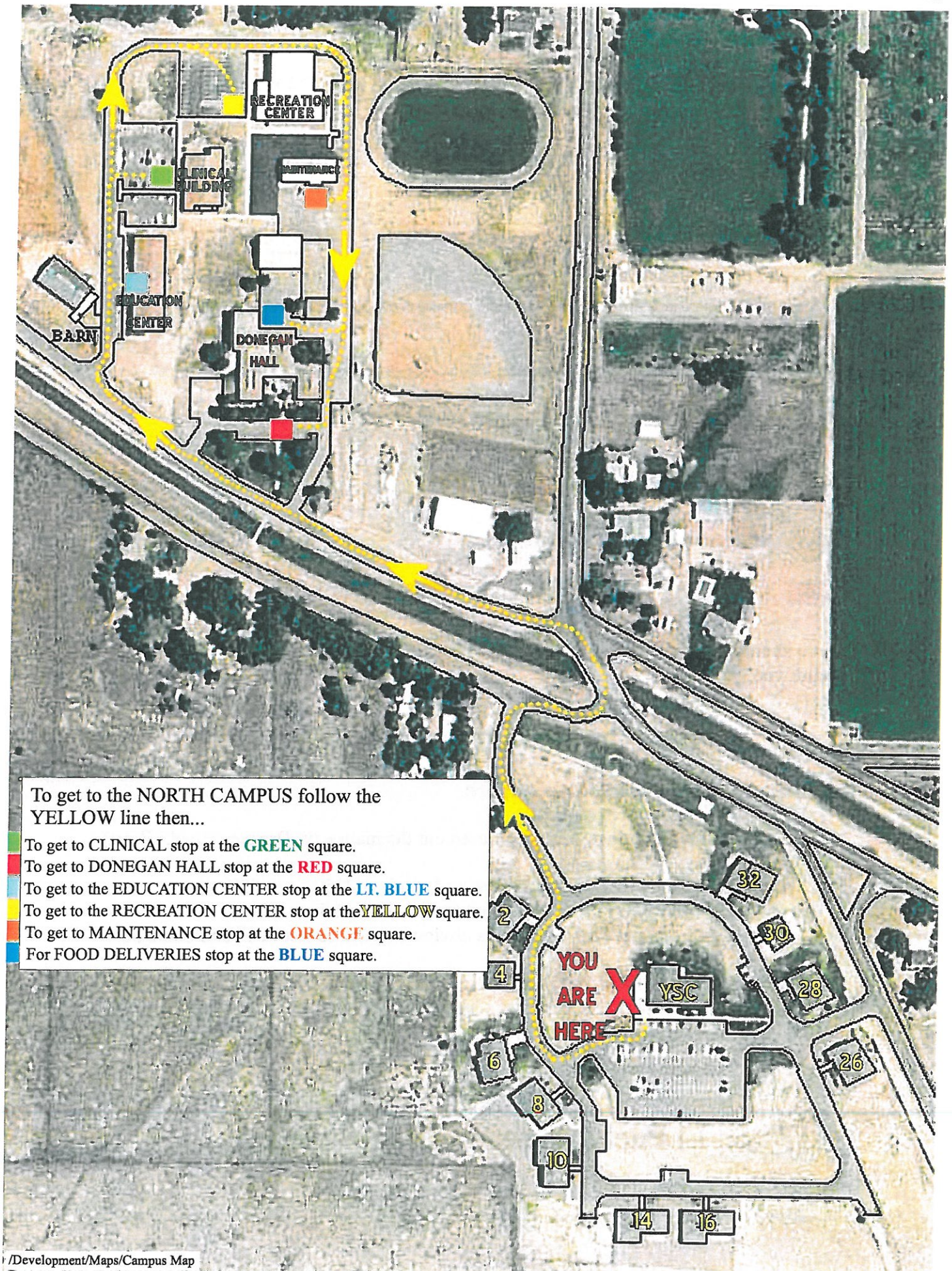
**\$4,595.76**

---

**Total of 170 PCs and 162 Monitors**

**\$119,891.16**







## DIRECTIONS TO EL PUEBLO BOYS' & GIRLS' RANCH Youth Services Center



1: I-25 South



2: Take EXIT 98A toward US-50 E / LA JUNTA.



3: Turn LEFT onto S SANTA FE AVE / US-50 BR. Continue to follow US-50 BR E.



4: Turn RIGHT onto ASPEN ST / S ASPEN RD. Continue to follow S ASPEN RD.



5: Turn RIGHT onto LASALLE RD.



6: Turn LEFT onto EL PUEBLO RANCH WAY.



7: Turn RIGHT to stay on EL PUEBLO RANCH WAY.



8: End at **El Pueblo Boys & Girls Ranch: (Youth Service Center)**  
1 El Pueblo Ranch Way, Pueblo, CO 81006, US

**If you should have any questions, please contact our Receptionist at 544-7496**  
**Thank you.**

---

### Directions from Colorado Springs Airport:

1. From Colorado Springs Airport proceed out the main exit, Drennen Road, (West) to Academy.
2. Left on Academy (South) to I 25. Proceed south on I25 to exit 98B
3. (TO THE MARRIOTT) Exit 98B (First Street.) from I25
4. Head west from exit 98B. Marriott is obvious, on the corner of 1<sup>st</sup> and Santa Fe Streets
5. (TO THE EPB&GR) I 25 to Exit 98A (Santa Fe) or take Santa Fe head South from the Marriott.

**El Pueblo Campus Map Attached**