

# Library

PUEBLO CITY-COUNTY

news & events

November 2016

PRINTED THANKS TO THE GENEROUS SUPPORT OF FRIENDS OF THE LIBRARY

**Locations Key:**

AV Avondale Satellite

BK Barkman

BS Beulah Satellite

GI Giodone

LU Lucero

LB Lamb

LY Library @ the Y

GV Greenhorn Valley

PW Pueblo West

RA Rawlings

## Third annual Latina/Latino Book Festival: Discover Your Literary Universe

PCCLD and CSU-Pueblo's Chicano Studies and English departments, host the 3<sup>rd</sup> annual Latino/Latina book Festival to promote growth in literacy, writing and publishing. This year features author, Benjamin Saenz who has received awards for several of his books, including *Aristotle and Dante Discover the Secrets of the Universe*. Presentations on writing, editing and publishing are scheduled.

Register online at [www.pueblolibrary.org](http://www.pueblolibrary.org). For more information contact Charlene Garcia Simms at 562-5600, ask for genealogy. To reserve a boxed lunch for the day call Bob Pacheco by Wednesday, Nov. 16 at (719) 544-4040, otherwise, lunch is on your own.

**Benjamin Saenz events:****Thursday, Nov. 17, 4 p.m.**

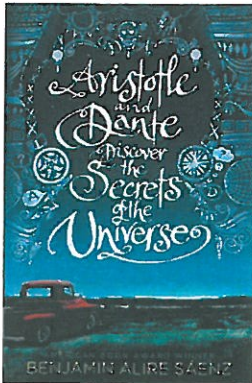
LARC auditorium, Room 109, CSU-Pueblo  
Readings by Benjamin Saenz, event is free and open to the public.

**Friday, Nov. 18****6:30 p.m., RA, Ryals Room-4<sup>th</sup> floor**

Event is free and open to the public.

Reception for Benjamin Saenz and poetry readings.

One November Morning art exhibit by artists Brent Learned and George Levi Curtis, descendants of the Sand Creek Massacre.



Benjamin Saenz

**Saturday, Nov. 19****9 a.m.-4 p.m., RA, Ryals Room-4<sup>th</sup> floor****Schedule:**

9-9:30 a.m. On-site registrations and vendors open; refreshments provided

9:30 a.m. Benjamin Saenz presentation

10:30 a.m. break

10:45-11:45 a.m. Dr. Luis Torres, *Rewriting: changing and rearranging, pruning and smoothing...*

11:45 a.m.-12:30 p.m. Lunch (see note above)

12:30-1:15 p.m. Jill Smith, director at Denver Publishing Institute at DU, *Book Publishing Unveiled: Beyond the lofty ambitions and the highbrow reputation, it is a business.*

1:30-2:30 p.m. Panel: Authors of *El Movimiento de Pueblo, An Anthology of Chicana and Chicano Activism* share their experience in writing and publishing the book.

2:45-3 p.m. break

3 p.m. Reading by Benjamin Saenz

**One November Morning Exhibit**

On display Nov. 8-Dec. 31,

RA, InfoZone-4<sup>th</sup> floor

Artists Brent Learned and George Levi, descendants of the Sand Creek Massacre of



Nov. 29, 1864, have created an exhibit of artwork depicting that day. More than 150 Cheyenne and Arapaho people were viciously massacred at Sand Creek, Colo. The work of Cheyenne and Arapaho focuses on the remembrance, honor and strength of their ancestors and leaders. This exhibit has been shown at the Denver Art Museum and galleries at University of Denver and Northwestern University.

**One November Morning events:****Saturday, Nov. 26, RA, InfoZone-4<sup>th</sup> floor****One Nov. Morning Artist Talk, 11 a.m.**

Artists Brent Learned and George Levi Curtis discuss their art, followed by viewing of the film *Colorado Experience: Sand Creek Massacre*.

**Ledger Art Family Workshop, 3-4 p.m.**

Learn about ledger Art at this family friendly art workshop.

**Hours:**

Monday - Thursday

9 a.m. to 9 p.m.

10 a.m. to 7 p.m. (Greenhorn, Giodone and Lucero only)

Friday &amp; Saturday

9 a.m. - 6 p.m.

10 a.m. - 6 p.m. (Greenhorn, Giodone and Lucero only)

Sunday (Rawlings only)

1 - 5 p.m.

**Phone:** 562-5600**Locations:**

Barkman Library

1300 Jerry Murphy Rd.

Greenhorn Valley Library

4801 Cibola Dr.

Colorado City, Colo.

Giodone Library

24655 U.S. Hwy 50 E.

Lamb Library

2525 S. Pueblo Blvd.

Library @ the Y

3200 Spaulding

Lucero Library

1315 E. 7<sup>th</sup> St.

Pueblo West Library

298 S. Joe Martinez Blvd.

Rawlings Library

100 E. Abriendo Ave.

**Satellite library locations:**

Avondale Elementary

213 Hwy. 50 E.

Beulah School

8734 Schoolhouse Ln.

**Board of Trustees:**

Fredrick Quintana, President

Donna Pickman, VP

Marlene Bregar

Lyndell Gairaud

Phil Mancha

Doreen Martinez

Jim Stuart

**Foundation Board:**

Julie Rodriguez, President

Jim Stuart, VP

Carol King, Secretary

P. Michael Voute, Treasurer

**Friends of the Library****Officers:**

Dustin Hodge, President

Stephanie Telles, VP

Monica Ayala, Secretary

Leslie Carroll, Treasurer

[www.pueblolibrary.org](http://www.pueblolibrary.org)





## ADA Committee

---

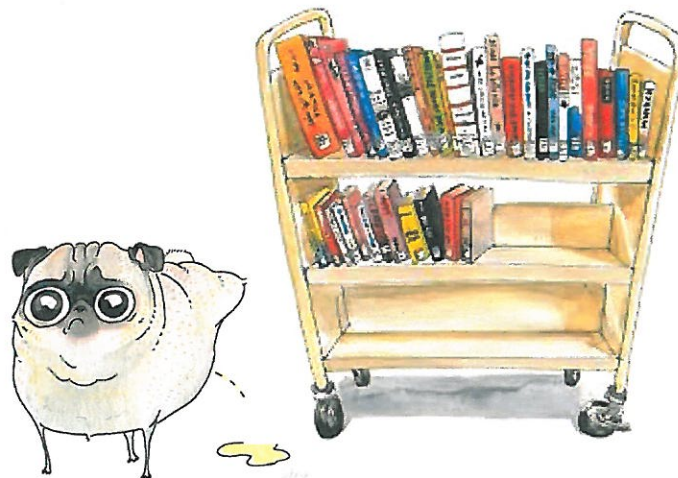
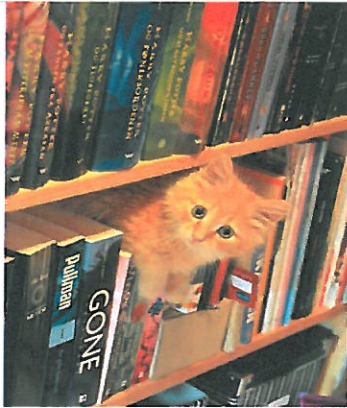
- Goals
- Community Partners
- Training

## Service Animals

---



## Companion Animals



## Use People First Language:

Describes what a person HAS, not what a person is.

### SAY:

people with disabilities

he has a cognitive disability

she has autism

he has a physical disability

she uses a wheelchair

he has an emotional disability

accessible parking

### INSTEAD OF:

handicapped, disabled, uniquely-abled

he's mentally retarded, mentally ill

she's autistic

he's disabled, crippled, handicapped

she's confined to a wheelchair

he's emotionally disturbed

handicapped parking

## Tips for Communicating with People Who Are Hearing Impaired



- ☐ Make eye contact before speaking
- ☐ Tap their shoulder if they are not facing you
- ☐ When a person is using an interpreter, don't speak directly to the interpreter, speak to the person
- ☐ Speak clearly, be concise
- ☐ Don't raise your voice
- ☐ Refer to PCCLD's assistive hearing technology if the person is not deaf
- ☐ Take a class on American Sign Language



## PCCLD Resources

---

Closed Caption Videos

Audio Books

Large Print

Digital Materials

ILL Braille Materials

CSL Talking book program

211 / Resources

## Assistive Technology

---

- Dedicated Computer Station
- Magnifier
- Windows on All Public Computers
- Website Chat line

## Adjustable Table and Chair



## Large Trackball



Accommodates: mobility

Large mouse ball moves pointer  
with limited motion

## Large Keyboard



Accommodates: mobility

## Interpreter Services

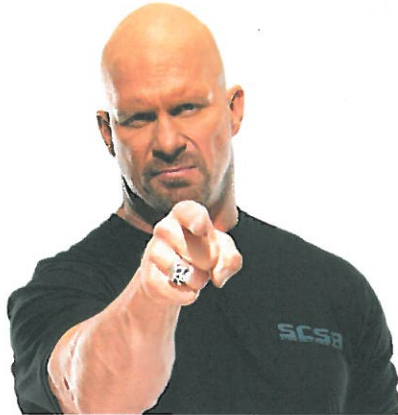


Sign Language Network, Inc.  
Colorado Springs  
719-599-4517



## Most Important Resource

---



## Moving Forward in 2017

---

Replacement Plan

Grant Funding

Partnerships & Resources

ADA Celebration Event !

## Computer with Large Screen



## Intellikeys Keyboard



Accommodates:  
cognitive, learning,  
mobility & visual

Programmable  
Several Overlays  
High Contrast  
Large Keys

## JAWS voice recognition software



Accommodates: blind & low vision

Screen reader program  
Microsoft Windows  
Reads the screen  
text-to-speech output

## ZoomText v10.1



Accommodates: low vision

Magnifies computer screen  
Enlarges up to 36x  
Visual pointer - mouse  
Camera magnifies print materials  
Enhances font, color, contrast



## Dragon Naturally Speaking Software



Accommodates: mobility, cognitive, vision

Speech Recognition Software

Headphones & microphone

The software has three primary areas of functionality:

Dictation to write or edit text

Converts text-to-speech

Voice commands for computer software

## Portables: hearing & vision



## More Portables



Reading Highlight Strips



Reading Rulers

If both sets of inflected forms were spelled alike, only one *gin* would be entered in this dictionary. In this way the dictionary includes many different spellings as possible yet avoids wasting space with repeated entry of words spelled in the same way. The SCRABBLE crossword game player, after all, needs only one entry to justify play.

**INFLECTED FORMS.** Inflected forms include the past tense, past participle, present participle, different forms of the verb, and the comparative and superlative of adjectives and adverbs. They are shown in capital letters immediately following the part-of-speech label. Regular inflected forms are listed on their own when they are not in the main text. References above: An inflected form is allowable for play in SCRABBLE® crossword games.

The principal parts of the majority of verbs are shown as: *ET* -ING, -S (or -ES when applicable). This indicates that the past tense and past participle are formed simply by adding -ed to the entry word, that the present participle is formed simply by adding -ing to the entry word, and that the present third person singular

Visual Tracking Bar Magnifier

## Sue Austin



EXPERTISE

## 5 reasons the world is still a wonderful place

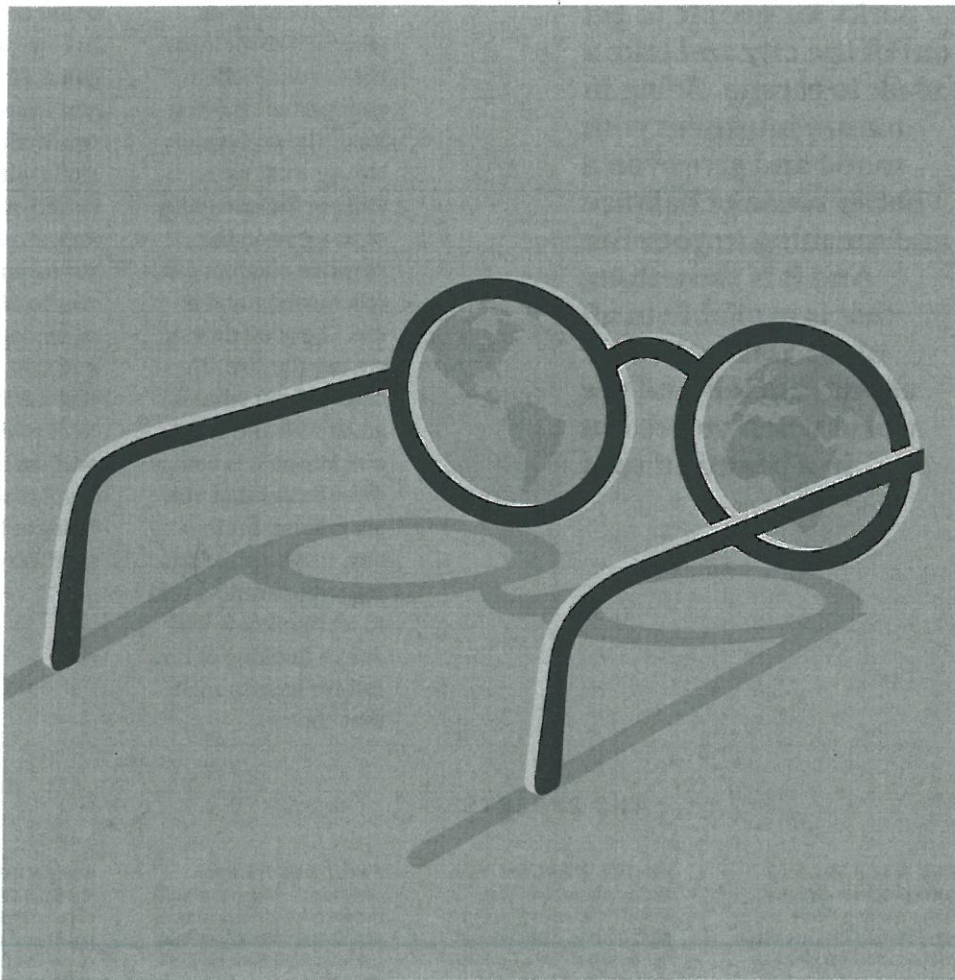
Things are—how shall we say it?—a little bananas these days. *Real Simple* asked five experts to remind us about some of the good stuff that can get lost in the shuffle.

1

CAITLIN MORAN  
**Libraries still exist.**

When you're a child, if your home is perhaps unhappy or else just cramped or dull, and you are too poor for the mall to hold any appeal for you, there is a third,

magical space you can go to on a rainy day: the library. A place where you can go without a penny in your pocket and be given a room full of worlds. For each book is a doorway you can walk through into another land. There are a million people, from across the world and through time, who are sitting on those shelves, dying to tell their stories and become your friend. It is a place where you will be valued not for what you wear or how you look, but for how many words you have collected and stored in your head (*corybantic, uxorious, shagreen, mimosa*). Most important, it's a place where you can just sit on a chair and read all the rude bits from Judy Blume books. And we invented these facilities! We made them happen. How cool is that? This is humanity's greatest achievement.



Written by Liz Loerke  
Illustration by Ben Wiseman



# 2017 Preliminary Budget Update October 27, 2016

	10/18/16	ADJUSTMENTS	CURRENT 10/27/16
Total Revenue	9,951,472	Add Lucero grant funds	3,000
			9,954,472
Total Expenditures	9,952,211	Add Lucero grant spending	3,000
		Adjust audit costs to actual	1,000
		Set dependent health plan contrib at 75-25	11,363
		Add Finance--GFOA nat'l conference	1,000
		Change life insurance carrier	(1,848)
Rev Over (Under) Exp	(739)		(12,254)

NOTES: 1) \$5,000 Chamberlain contributions: transfer from Special Rev Fund to Gen Fund to add to GF Fund Balance

2) \$13,819 is included for passage of Amendment 70 (increase to CO minimum wage / 20 MHTs impacted)

## 2017 PCCLD Employee Benefits Renewal

		Employee Cost per Paycheck					
		2016		2017		2017	
		Share		Share		Share	
Enrollment		80-20	75-25	80-20	70-30	Variance	80-20 75-25 Variance
<b>Health Insurance</b>							
<b>Kaiser 1000 *</b>							
Employee only	26	50.41		52.32		1.91	52.32 1.91
Employee & spouse	13	106.81		122.75		15.94	111.02 4.21
Employee & children	2	87.42		98.29		10.87	90.82 3.40
Employee & family	6	146.29		172.14		25.85	152.04 5.75
	47						
<b>Kaiser 2500 *</b>							
Employee only	5	44.17		45.84		1.67	45.84 1.67
Employee & spouse	0	93.37		107.06		13.69	97.00 3.63
Employee & children	2	76.44		86.29		9.85	79.40 2.96
Employee & family	3	127.75		149.98		22.23	132.76 5.01
	10						

\* Insurance broker consulting fee is split 80% PCCLD - 20% Employees on medical plans.

### AVERAGE WAGE CALCULATION

(the wages of 30 public service & support employees on the medical plan were averaged)

Average Gross Wage per Paycheck \$ 1,806.00

**2.5% Wage Increase per Paycheck \$ 45.15**

		Employee Cost Per Paycheck					
		2016		2017		2017	
		Share		Share		Share	
Enrollment		80-20	75-25	80-20	70-30	Variance	80-20 75-25 Variance
<b>DENTAL INSURANCE</b>							
<b>Dental Plan</b>							
Employee only	18	2.24		2.42		0.18	2.42 0.18
Employee & spouse	13	4.68		5.60		0.92	5.07 0.39
Employee & children	3	5.13		6.98		1.85	6.22 1.09
Employee & family	8	8.75		11.83		3.08	10.26 1.51
	42						
<b>Alpha Discount Plan</b>							
Employee only	10	0.98		0.98		0.00	0.98 0.00
Employee & spouse	4	2.02		2.22		0.20	2.02 0.00
Employee & children	0	2.59		3.22		0.63	2.85 0.26
Employee & family	3	3.07		3.97		0.90	3.47 0.40
	17						
<b>VISION INSURANCE</b>							
Employee only	29	0.41		0.41		0.00	0.41 0.00
Employee & spouse	14	0.88		0.97		0.09	0.88 0.00
Employee & children	3	0.81		1.03		0.22	0.81 0.00
Employee & family	9	1.3		1.60		0.30	1.30 0.00
	55						

## Employee Share of Monthly Premium

	2003	2004	2005	2006	2007	2008	2009	2010	2011	2012	2013	2014	2015	2016	2017	2003-2017
Employee Only	92.89	79.17	89.87	91.39	99.59	108.38	100.44	103.75	107.32	109.89	112.97	112.97	115.51	114.96	119.49	2003-2017
Employee + Spouse	187.90	146.02	169.04	189.25	212.54	228.19	212.22	219.91	227.63	233.47	238.81	238.81	250.97	243.53	253.44	2003-2017
Employee + Kids	173.27	126.71	149.52	165.93	178.06	191.02	178.04	184.75	191.05	195.98	200.63	200.63	177.43	203.88	212.01	2003-2017
Employee + Family	264.33	194.14	231.58	268.69	296.15	316.69	295.29	306.36	316.98	325.30	335.55	335.55	332.45	340.58	354.47	2003-2017
EE Only change	-15%	14%	2%	9%	9%	-7%	3%	3%	2%	3%	0%	2%	0%	4%	29%	29%
EE+Spouse change	-22%	16%	12%	12%	7%	-7%	4%	4%	3%	2%	0%	5%	-3%	4%	35%	35%
EE+Kids change	-27%	18%	11%	7%	7%	-7%	4%	3%	3%	2%	0%	-12%	15%	4%	22%	22%
EE+Family change	-27%	19%	16%	10%	7%	-7%	4%	3%	3%	3%	0%	-1%	2%	4%	34%	34%

includes medical/dental/vision