

# Libraries for Life

Invest in  
Pueblo's future

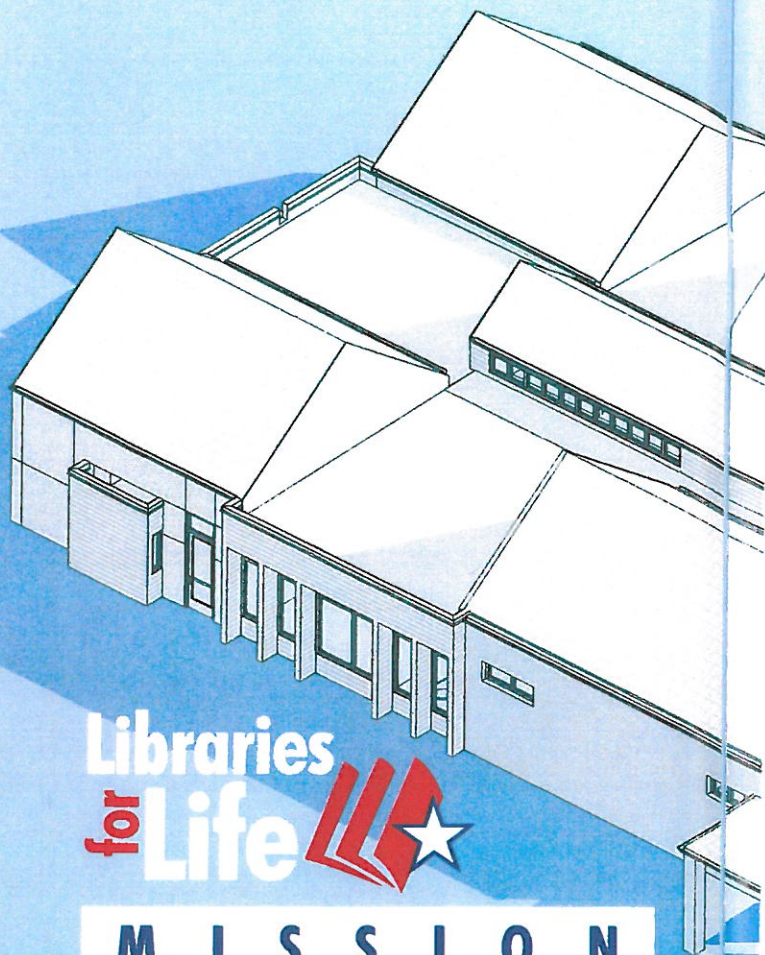
*★ Pueblo Library Foundation ★*



PUEBLO CITY-COUNTY  
**LIBRARY**  
Ideas • Imagination • Information

[www.pueblolibrary.org](http://www.pueblolibrary.org)

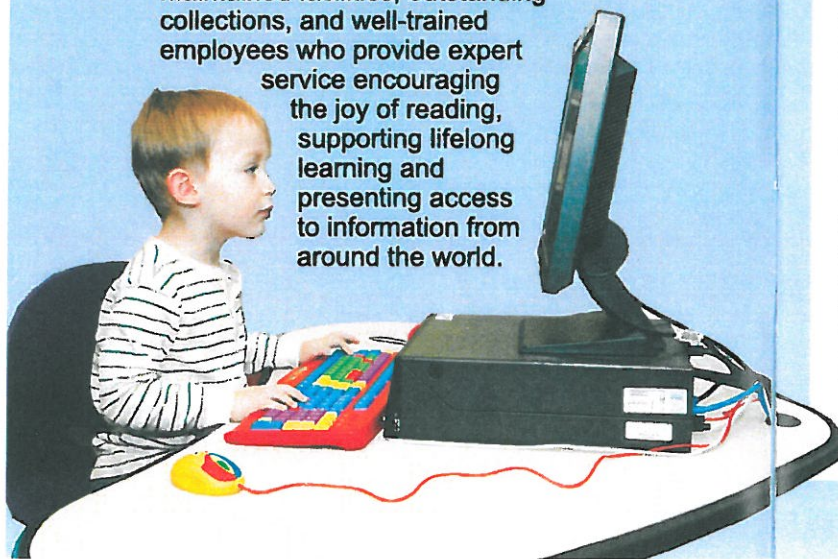




## Libraries for Life

### M I S S I O N

To serve as a foundation for our community by offering welcoming, well-equipped and maintained facilities, outstanding collections, and well-trained employees who provide expert service encouraging the joy of reading, supporting lifelong learning and presenting access to information from around the world.



**N**othing demonstrates the vitality of a community better than a public library! Every day, hundreds of people from all walks of life come to the library to engage in life-long learning. Today's library is a vital resource for information, literacy, technology and idea exchange.

In 2012, Pueblo City-County Library District reached these exciting milestones:

- ★ 1,808,956 checkouts, a 41 percent increase in just five years
- ★ 1,065,840 library visits, a 2.4 percent increase over 2011
- ★ 112,371 people attended library-sponsored programs and special events, a 37 percent increase in five years
- ★ 491,209 computer logons, a 21 percent increase in computer use over 2011

To meet this ever-increasing demand for library services, PCCLD is expanding to three neighborhoods in Pueblo County — East Side, Greenhorn Valley and St. Charles Mesa. Each library will provide community members with access to more than 25,000 books, DVDs and other library materials in addition to a community room, laptop computers and online resources.

PCCLD is being fiscally responsible by capitalizing on some key cost-saving measures. Each library will be 7,500 square feet with a similar footprint, but will have distinct architectural elements to complement each neighborhood. The downturn in the economy has made construction affordable and building all three libraries at one time reduces overall construction and design costs.

PCCLD has more than 90 percent of the funding necessary for this \$6.1 million project and is fundraising to fill the funding gap of \$535,000. Naming opportunities are available at each library and are detailed on the following pages.

Now is the time to build! Please join Pueblo Library Foundation and PCCLD as we build three new Libraries for Life!



# The East Side LIBRARY



Like us on Facebook:  
[www.facebook.com/pueblolibrary](http://www.facebook.com/pueblolibrary)



**K**nown for its cultural and architectural diversity, Pueblo's East Side was established in the early 1800s and has one of the largest concentrations of early architecture in the city of Pueblo. The new East Side Library will be built at the intersection of 7<sup>th</sup> Street and Monument Avenue — easily accessible via bus routes and conveniently located next to Risley Middle School and the heart of the East Side's shopping district.

Be a part of the story and help build a Library for Life on Pueblo's East Side.

Naming Opportunities	
Donor wall	\$1,000
Study nook #1	\$2,500
Study nook #2	\$2,500
Study nook #3	\$2,500
Study nook #4	\$2,500
Fireplace/water feature	\$5,000
Art gallery	\$5,000
History wall	\$5,000
Small meeting room	\$10,000
Children's section	\$10,000
MediaScape	\$15,000
Art & plaque at main entry	\$20,000
Large meeting room	\$25,000
Library	\$150,000

This illustration by OZ Architecture features the south view of the East Side Library that will be located on the corner of 7<sup>th</sup> Street and Monument Avenue.



# The Greenhorn Valley

## LIBRARY



**T**ucked into the shadow of the Greenhorn Mountains, the Greenhorn Valley has a colorful history. The Colorado City and Rye area was settled in the mid-1800s and features beautiful mountain vistas, outdoor recreation and small-town charm. The new Greenhorn Valley Library will be built on the edge of Greenhorn Meadows Park, conveniently located just off Colorado State Highway 165 and Cibola Drive.

Be a part of the story and help build a Library for Life in the Greenhorn Valley.



**Donate online:**  
[www.pueblolibrary.org/newlibraries](http://www.pueblolibrary.org/newlibraries)

Naming Opportunities	
Donor wall	\$1,000
Study nook #1	\$2,500
Study nook #2	\$2,500
Study nook #3	\$2,500
Study nook #4	\$2,500
Fireplace	\$5,000
Art gallery	\$5,000
History wall	\$5,000
Small meeting room	\$10,000
Children's section	\$10,000
MediaScape	\$15,000
Art & plaque at main entry	\$20,000
Large meeting Room	\$25,000
Library	\$150,000



This illustration by OZ Architecture features the south view of the Greenhorn Valley Library which will be built in Colorado City.



# The St. Charles Mesa

## LIBRARY



**B**lessed with water, sunshine and fertile soil, the St. Charles Mesa has a long and rich agricultural history. The St. Charles Mesa has evolved into a beautiful suburban community where families enjoy the outdoors, team sports and farm-fresh produce. This new addition to the St. Charles Mesa Community will be built on Highway 50 and 24 ½ Lane.

Be a part of the story and help build a Library for Life on the St. Charles Mesa.



**Donate now!**  
**Call (719) 562-5635**

Naming Opportunities	
Donor wall	\$1,000
Study nook #1	\$2,500
Study nook #2	\$2,500
Study nook #3	\$2,500
Study nook #4	\$2,500
Fireplace/water feature	\$5,000
Art gallery	\$5,000
History wall	\$5,000
Small meeting room	\$10,000
Children's section	\$10,000
MediaScape	\$15,000
Art & plaque at main entry	\$20,000
Large meeting room	\$25,000
Library	\$150,000



This illustration by OZ Architecture features the south view of the St. Charles Mesa Library that will be located on Highway 50.



**T**he library district's expansion project was recently approved as an Enterprise Zone Project by the Colorado Economic Development Commission. Qualifying donations of \$250 or more are eligible for a Colorado state tax credit of 25 percent of the donation up to \$100,000, depending on each donor's tax bracket.

New rules require PCCLD to collect the donor's Social Security number in order for them to receive this tax credit. To make a gift through the Enterprise Zone, please make your check payable to Enterprise Zone Coordinator with Pueblo Library Foundation on the memo line. Please include your telephone number and we will contact you to obtain your social security number.

As with all charitable donations, contact your accountant or tax professional to determine the donation's impact on your taxes.

When you invest in the future of your library, you invest in the future of our community, its children and those who seek a better life through education and enlightenment. Join us in making this exciting project a reality!

Annual Income	Donation	Deductions & Credits	Net Cost of Donation
\$29,701 – \$71,950	\$250	\$137	\$113
	\$1,000	\$546	\$454
	\$10,000	\$5,460	\$4,537
\$71,951 – \$150,150	\$250	\$144	\$106
	\$1,000	\$576	\$424
	\$10,000	\$5,763	\$4,237
\$150,151 – \$326,450	\$250	\$157	\$93
	\$1,000	\$626	\$374
	\$10,000	\$6,263	\$3,737

This is an estimate only. Please consult with a tax professional to determine the impact on your taxes.

**Donate now!**

**Mail your check to:**  
**Pueblo Library Foundation • 100 E. Abriendo Ave., 81004**

**or logon to [www.pueblolibrary.org/newlibraries](http://www.pueblolibrary.org/newlibraries) to donate online**

**Yes, I want to help build libraries for life!**

Contact me if my contribution qualifies for a naming opportunity.

☐

Other amount \$ \_\_\_\_\_

☐

\$2,500

☐

\$500

☐

\$250

☐ My check of \$249 or less payable to **Pueblo Library Foundation** OR \$250 or more payable to the **Enterprise Zone Coordinator** is included.

☐ Please charge my credit card for the amount indicated above:

Name as it appears on the card

Credit card number

Expiration date

3-digit CCV code

Signature

Date

Name

Email Address

Mailing Address

Phone Number

City/State/Zip

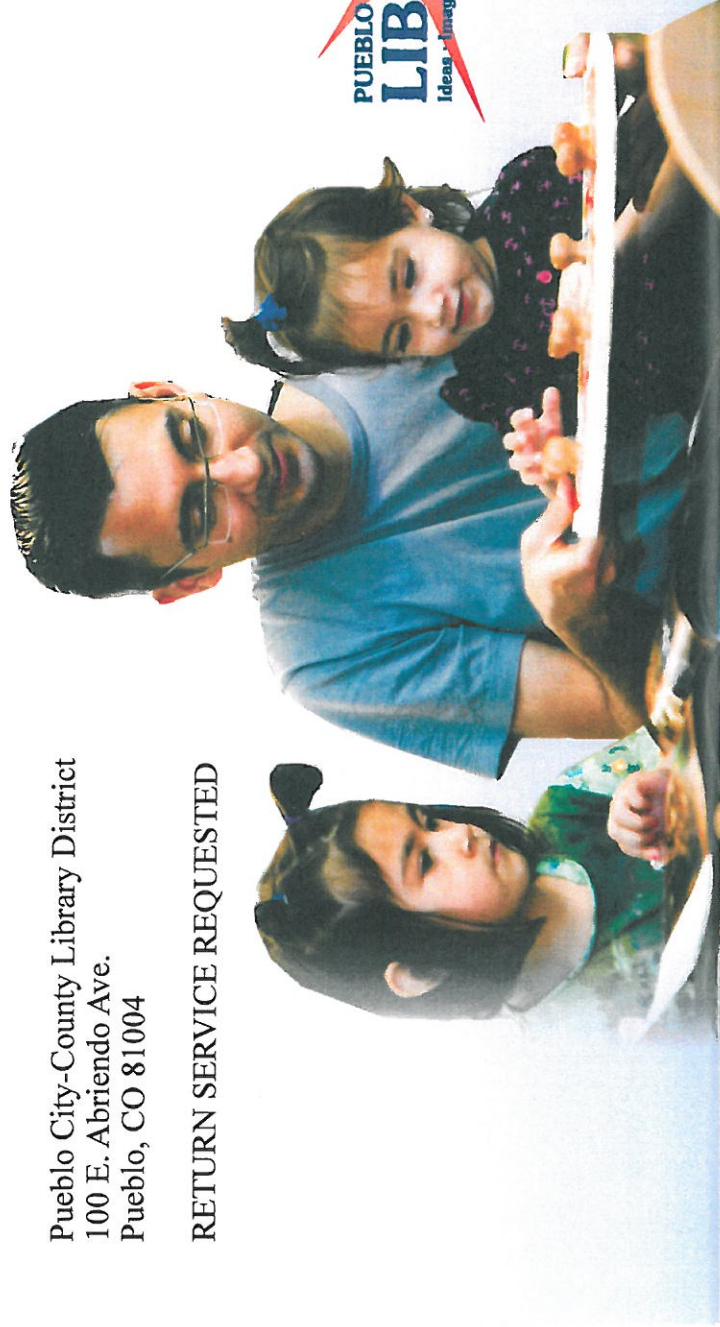
Complete this form and mail to: Pueblo Library Foundation, 100 E. Abriendo Ave, Pueblo, CO 81004 or donate online at [www.pueblolibrary.org](http://www.pueblolibrary.org) or (719) 562-5635.

Pueblo City-County Library District  
100 E. Abriendo Ave.  
Pueblo, CO 81004

RETURN SERVICE REQUESTED

Non-Profit  
Organization  
U.S. Postage  
PAID  
Pueblo, Colorado  
Permit No. 89

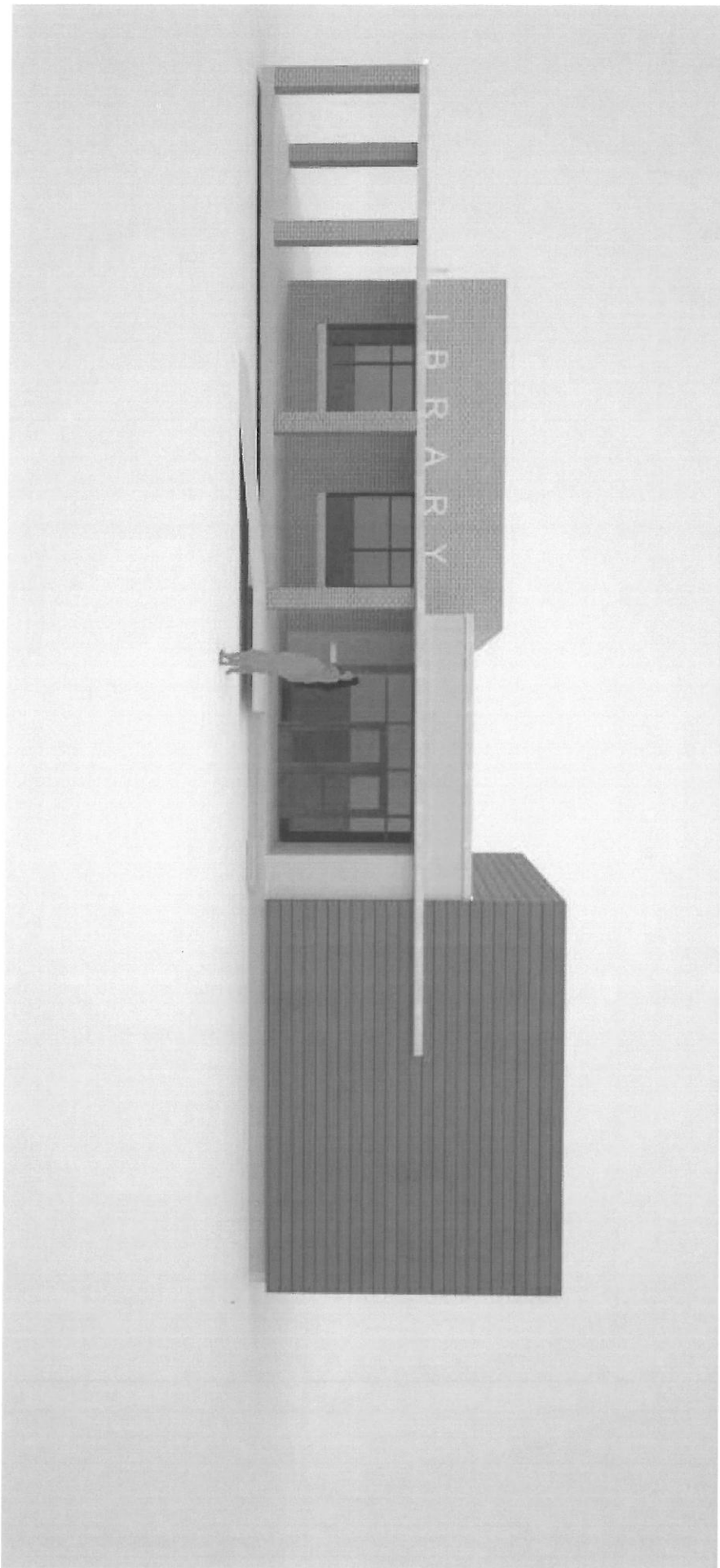
PUEBLO CITY-COUNTY  
**LIBRARY**  
Ideas • Imagination • Information



## **EAST SIDE LIBRARY**

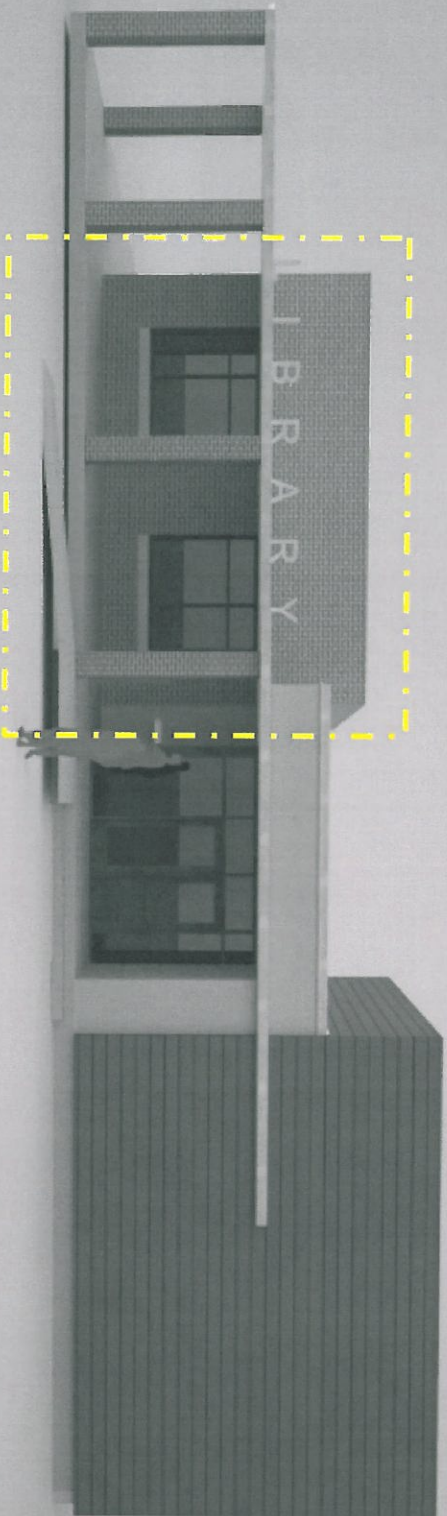
**2.0**





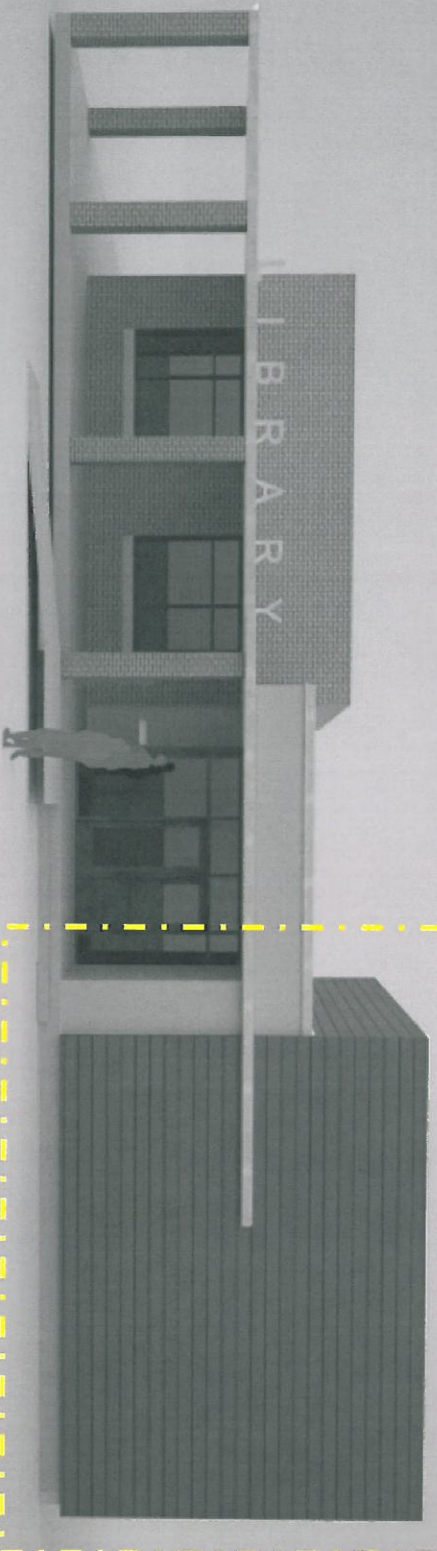


**Reference to the past**

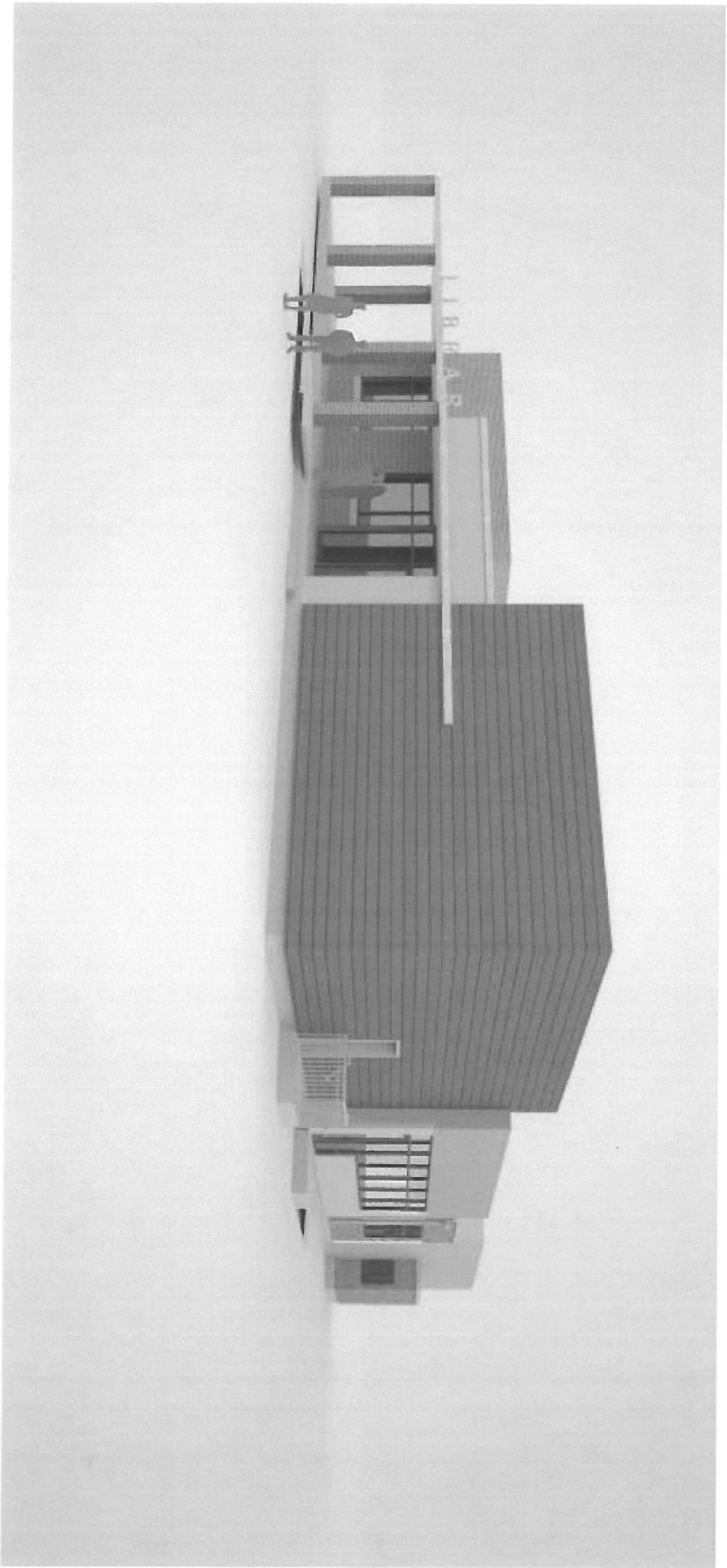




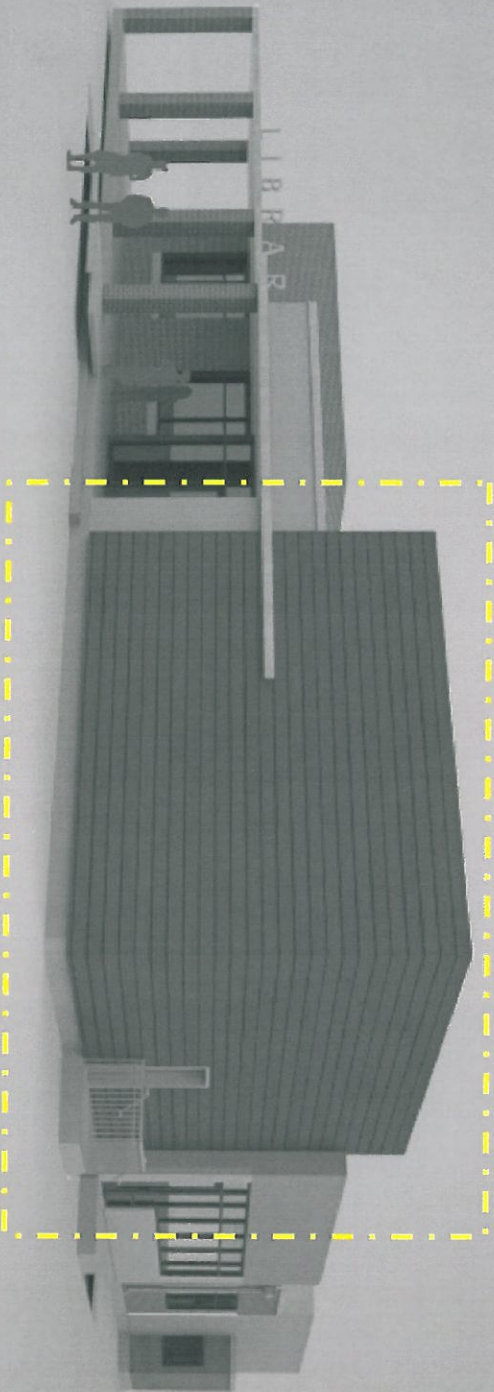
## Reference to the future



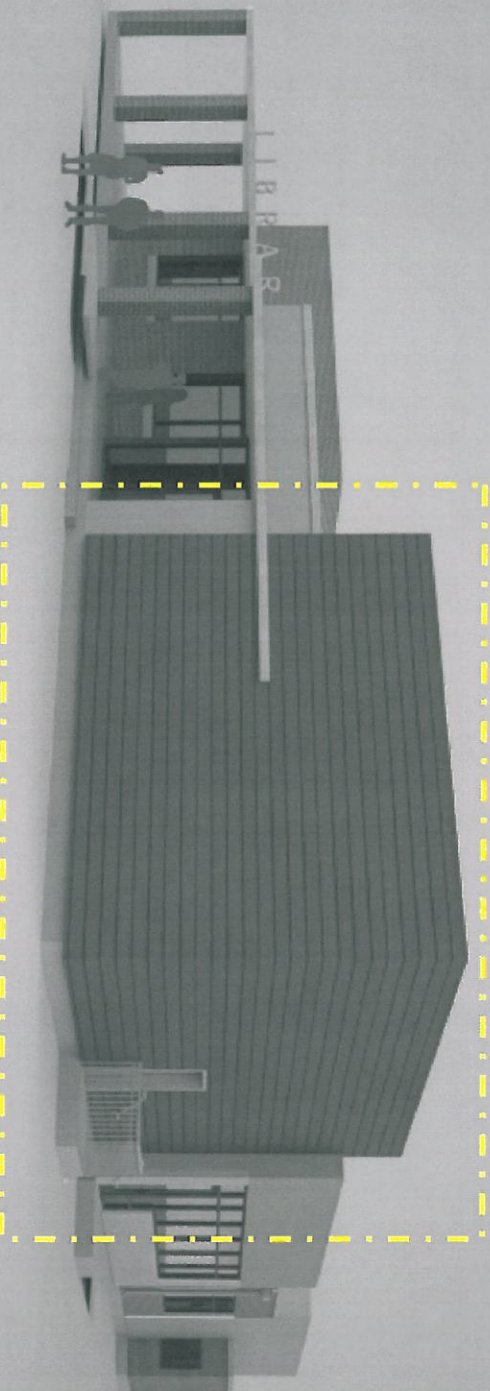




Treat as volume





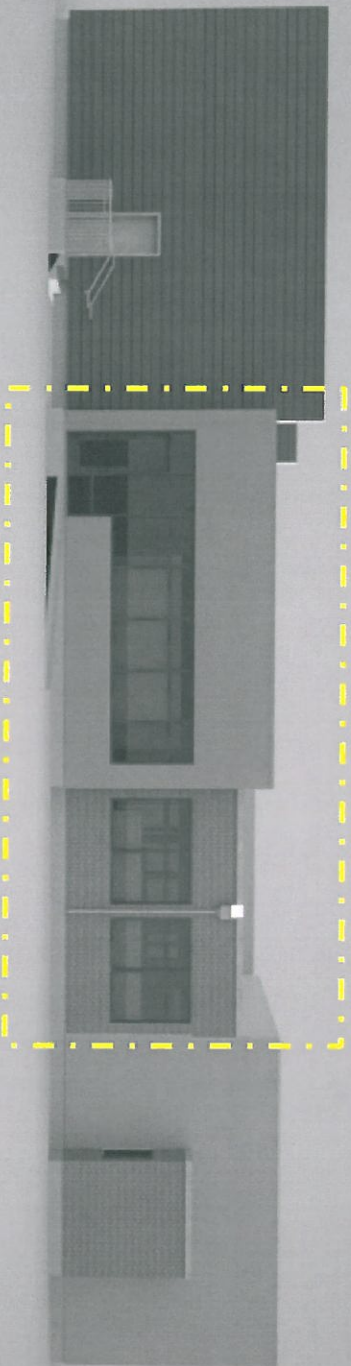


## **Treat as volume**

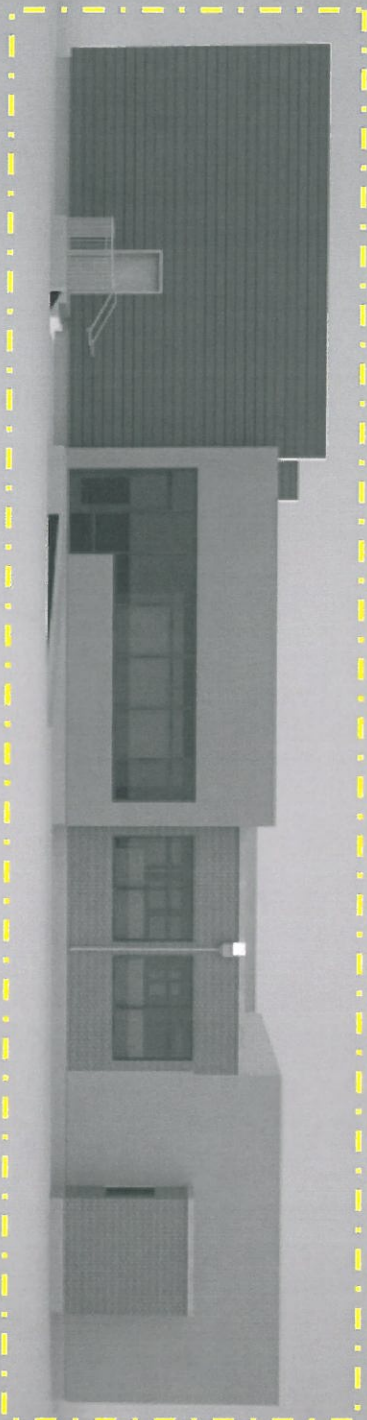
*Material should be special  
Connection to Steel Mills?*





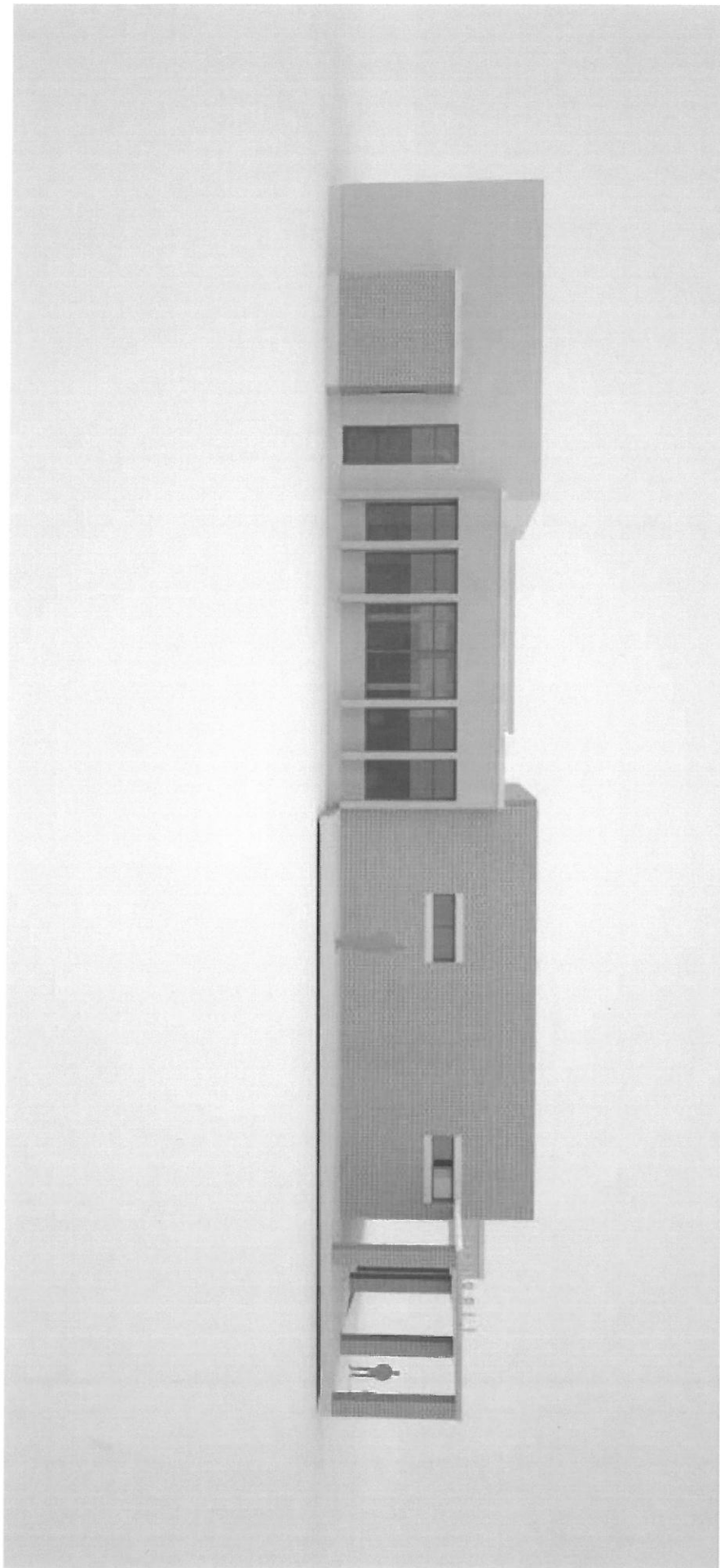


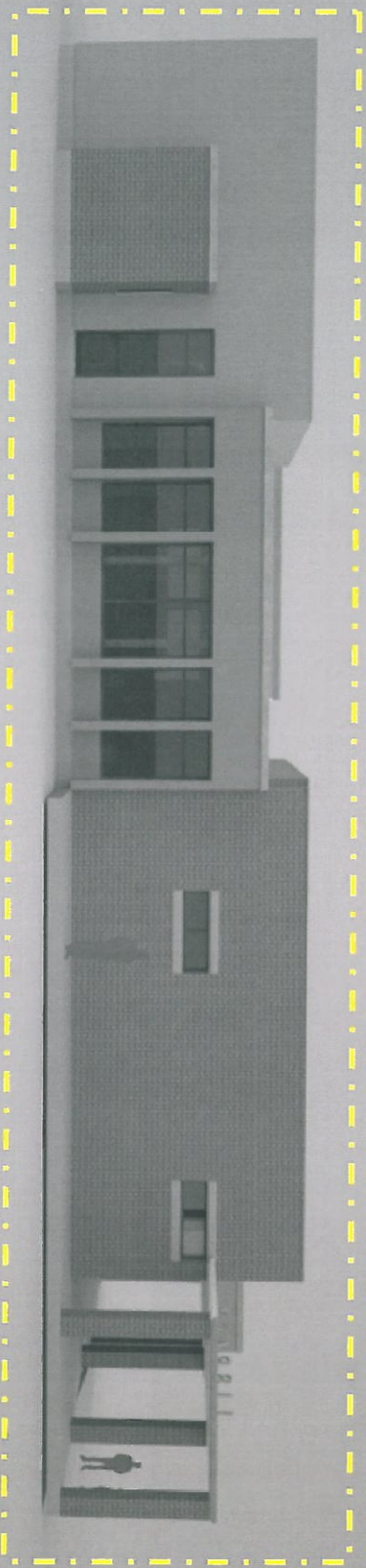
Showcase the energy inside



**Creates urban dialog**







**Material / color pallet is flexible**