

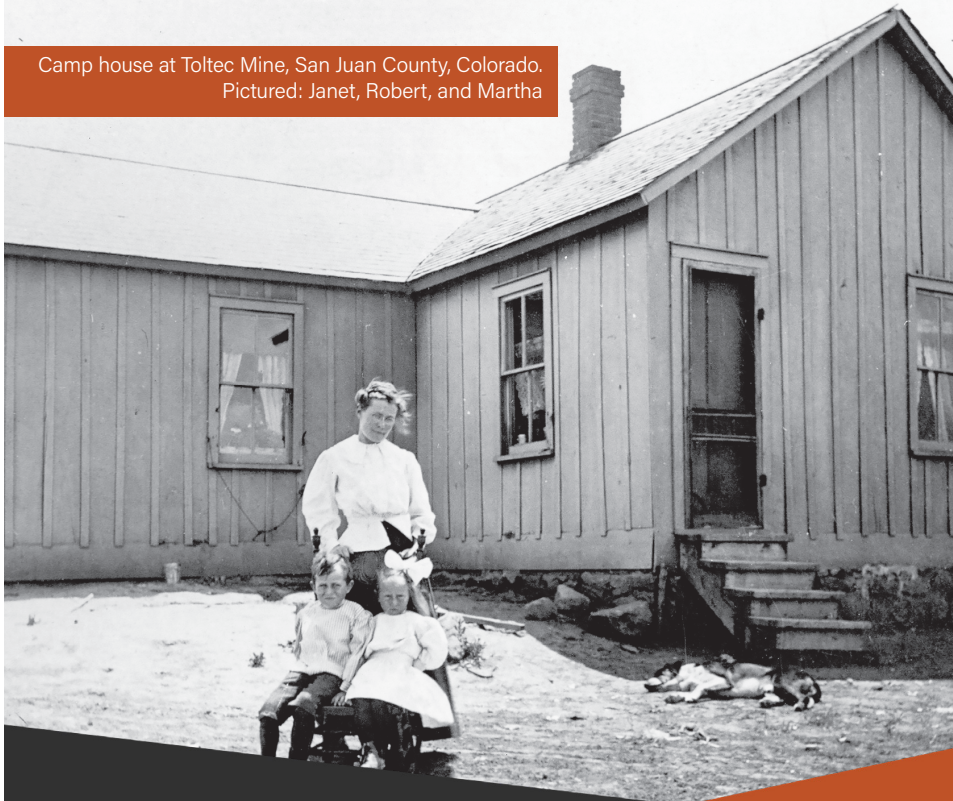
EXPLORING STEEL ENERGY AND THE WEST



NUMBER FOUR IN A SERIES OF 10

See the exhibit at www.pueblolibrary.org/exploringsteel

Camp house at Toltec Mine, San Juan County, Colorado.
Pictured: Janet, Robert, and Martha

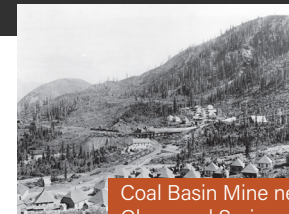


COAL TOWNS OF CF&I

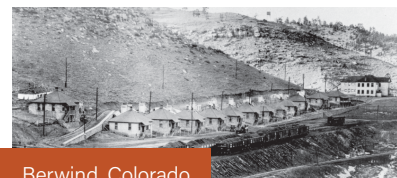
In the 19th and earlier 20th centuries, coal was mined in this area to provide fuel for local industry. Miners lived quite modestly. Houses in the coal mining towns owned by Colorado Fuel & Iron were generally grouped closely together and near the mine itself. Coincidentally, many of the homes relied upon coal for heat in the winter. A company-owned store was also located nearby the houses and mines. Miners were often paid in scrip that was only good to make purchases in the company store. Mining towns consisted not only of miners but their families as well. Women and children abounded in the quaint towns and schoolhouses were not an unfamiliar sight. Schools were technically independent from CF&I, though the company built many schoolhouses, selected teachers, and supplied books. Due to the remoteness of some of the mining towns, education typically ended at eighth grade. High schools were simply too far away.



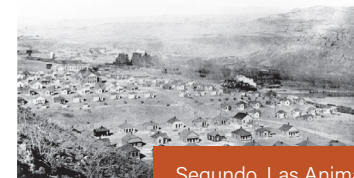
Interior of an Italian Workman's Home at Rouse.



Coal Basin Mine near Redstone & Glenwood Springs, Colorado, 1906



Berwind, Colorado



Segundo, Las Animas County, 1903