

## What is needed to use a computer?

**System Unit** -- Where all the storage and processing is done!

- **Hard Drive** – Storage device.
- **RAM** (Random Access Memory) – Computer’s Memory. More RAM means more memory.
- **CPU** (Central Processing Unit) – Computer’s brain. Carries out all the functions of the computer.

**Hardware** – the stuff you touch (speakers, keyboard, monitor, printer, mouse).

**Input Hardware**—we control the input (mouse, keyboard).

**Output Hardware**—the processed data. (Speakers, monitor, printer.)

**Software** – the stuff you cannot touch (MS Word, Internet Explorer, Google Chrome).

**Operating System** – Windows 8.1. Sends software information to the hardware.

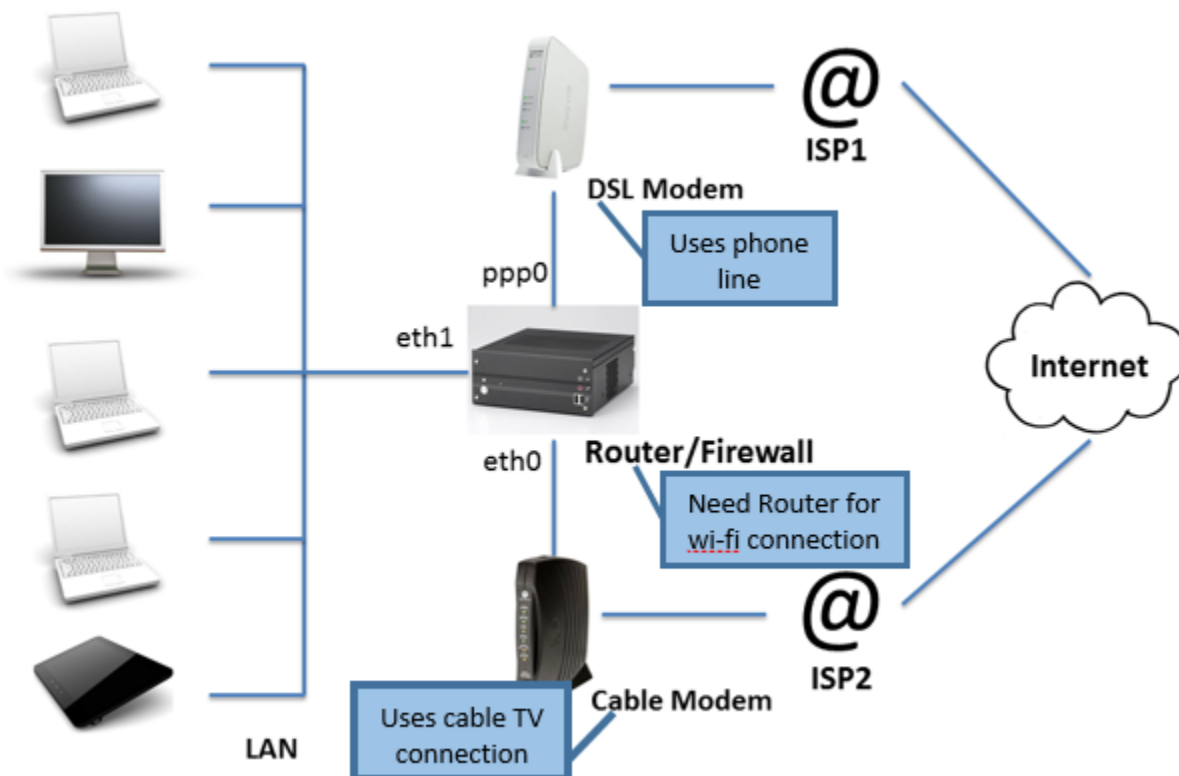
## Computer Cables



## External Storage Devices

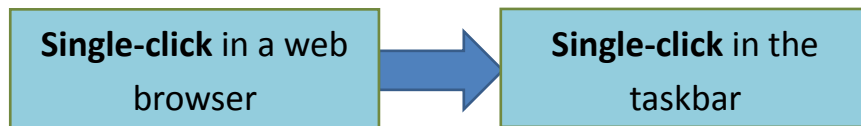
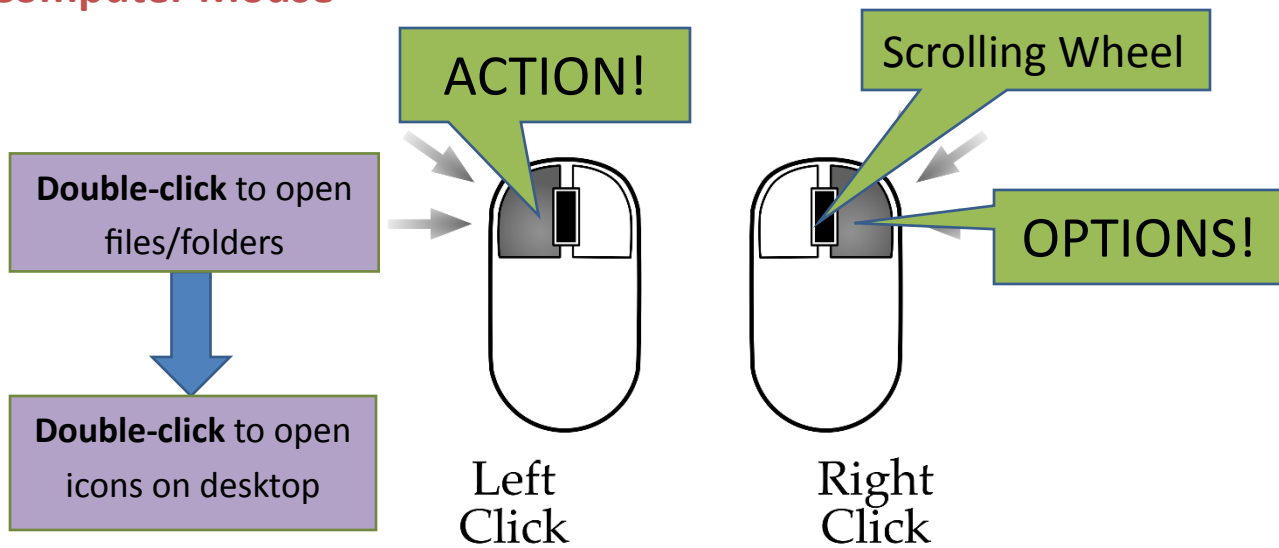


## Internet Connection

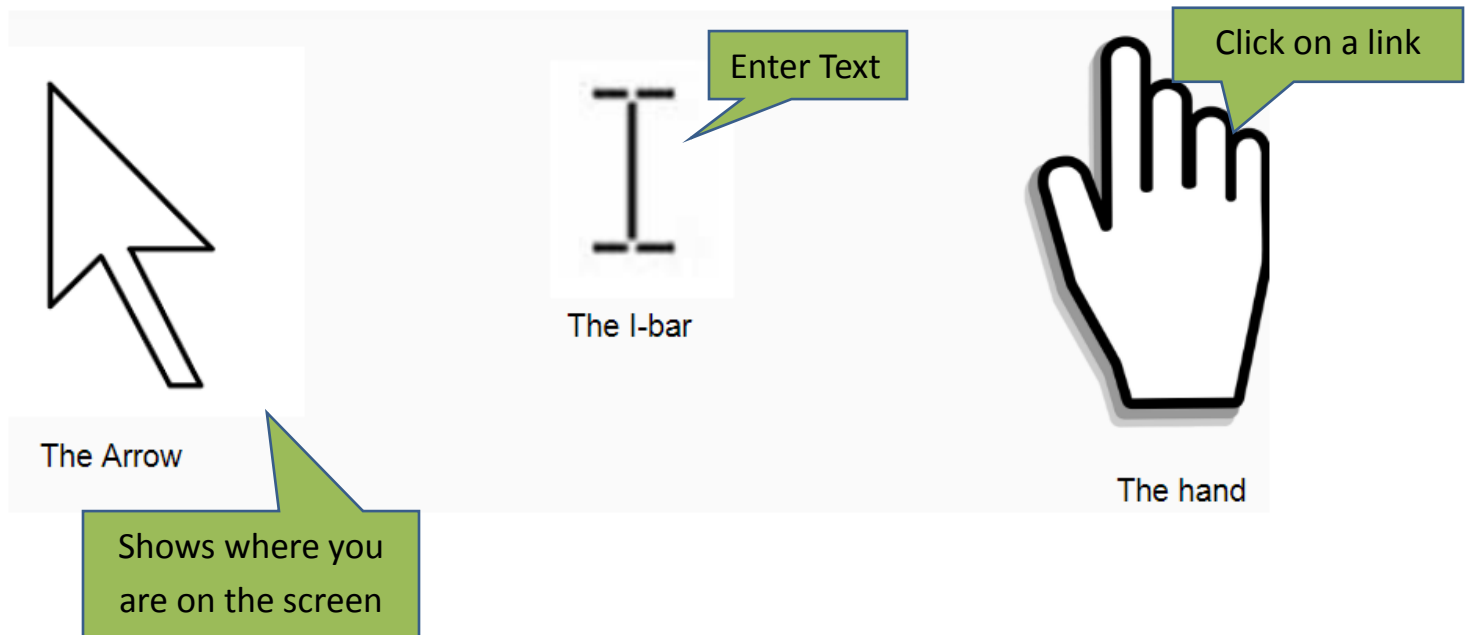


Source: Net-ISP-Balance. Retrieved May 02, 2017, from <http://lstein.github.io/Net-ISP-Balance/>

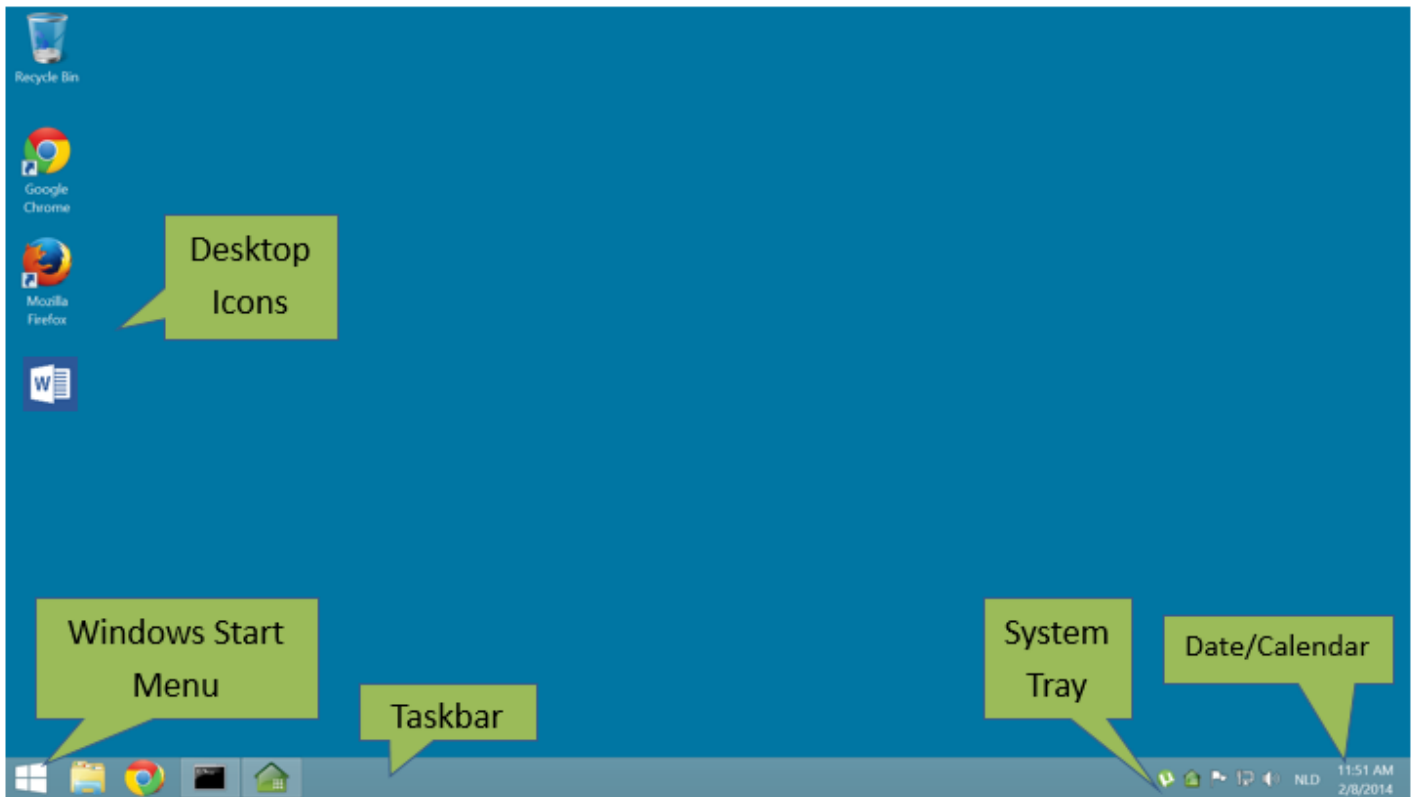
## Computer Mouse



## Mouse Pointer—takes on different shapes!

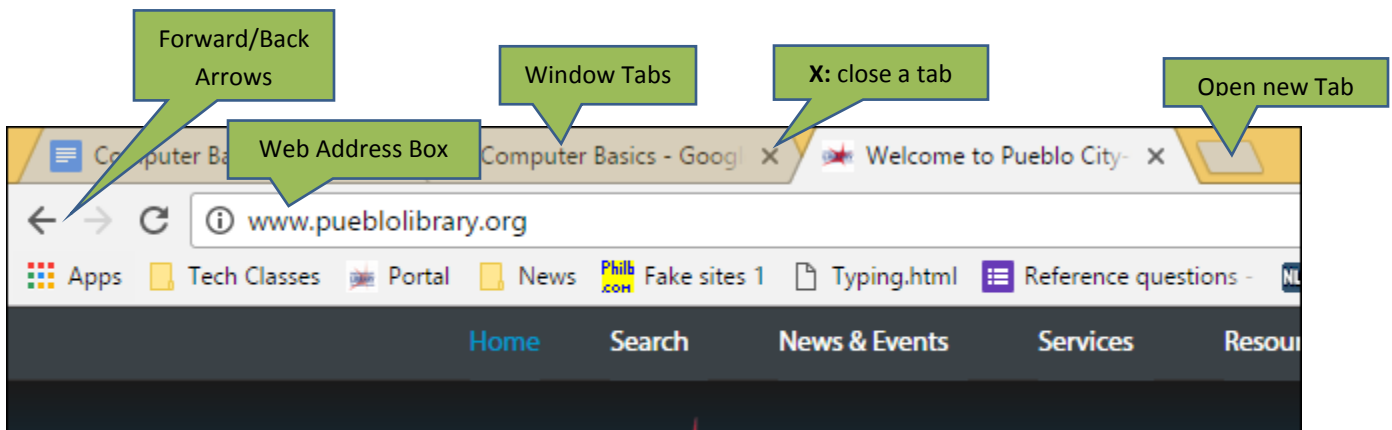


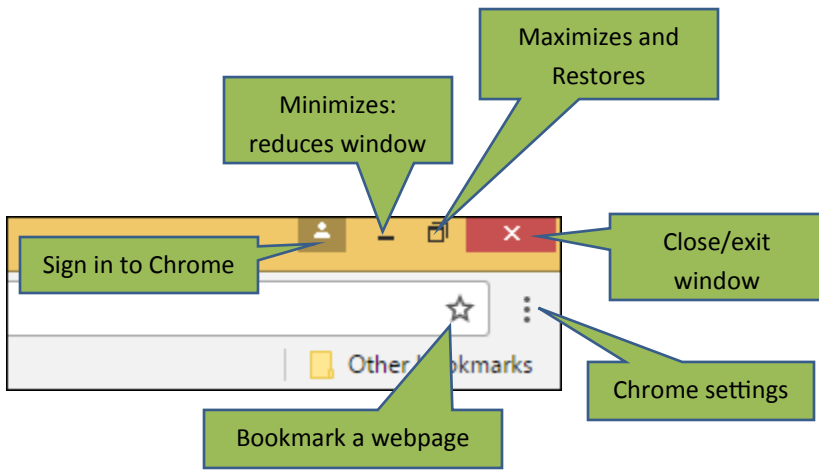
# Desktop Features



Let's go Online!

Open a Browser





## URL

### Uniform Resource Locator

`http://en.wikipedia.org/w/index.php?title=Burrito#Breakfast_burrito`

*↑*  
*scheme*

*↑*  
*domain name*

*↑*  
*file path*

*↑*  
*parameters*

*↑*  
*anchor*

GCFLearnFree.org Tutorial. Retrieved September 05, 2017, from

[https://www.gcflearnfree.org/print/internetbasics/understanding-urls?playlist=Internet\\_Basics](https://www.gcflearnfree.org/print/internetbasics/understanding-urls?playlist=Internet_Basics)

## Learn More!

**GCF LearnFree.org**

### Mouse Games:

[jigsawplanet.com](http://jigsawplanet.com)

[tvokids.com/preschool/games/beans-and-honey](http://tvokids.com/preschool/games/beans-and-honey)